



Install Check

User Guide

Copyright © 2009-2020 TaiRox Software, Inc. All rights reserved.

Important Notice

TaiRox does not warrant or represent that your use of this software product will be uninterrupted or error-free or that the software product can be run with any other version of Sage ERP Accpac other than 5.6A, 6.0A, or any version of Sage 300 other than 2012, 2014, 2016, 2017, 2018, 2019, 2020 or 2021, or that the information in this document is completely accurate. TaiRox warrants that any media by which you have received this software is free from defects. TaiRox will replace any such defective media. TaiRox expressly disclaims all other warranties, representations, conditions and guarantees of any kind including, but not limited to, warranties for merchantability or fitness for a particular use.

Install Check

Install Check is a program that checks the environment of a computer running Sage 300. We wrote it because we needed a program to specifically check Sage 300 environments – because if the environment is not correct, some or all functions in Sage 300 and third-party applications may not operate correctly.

Install Check collects a comprehensive list of diagnostic information relevant to Sage 300, TaiRox, and other third-party applications for Sage 300.

Install Check is provided as an executable file that leaves no footprint in the Sage 300 environment: it does not install, does not change the Windows registry, and does not require a license.

All Install Check functions let you print or copy the system and environment information to the Windows clipboard. For convenience, access is also provided to standard Sage 300 utilities that register all Sage 300 controls ("RegAcc") and that scan ISAM files ("Scan Isam").

Features and Benefits

- Can be brought from computer to computer on a memory stick.
- Displays color-coded **successful** and **failed** tests.
- Checks that PATH directories exist and are accessible.
- Checks that all Sage 300 folders are in place.
- Checks SQL Server drivers for compatibility.
- Provides [click-able links](#) to many Sage 300 files and directories.
- Lists system information with convenient copy and printing options.

Platform Requirements

- Sage 300 2012, 2014, 2016, 2017, 2018, 2019, 2020 or 2021, or Sage ERP Accpac version 5.6 or 6.0.
- A single executable program works with all platforms.

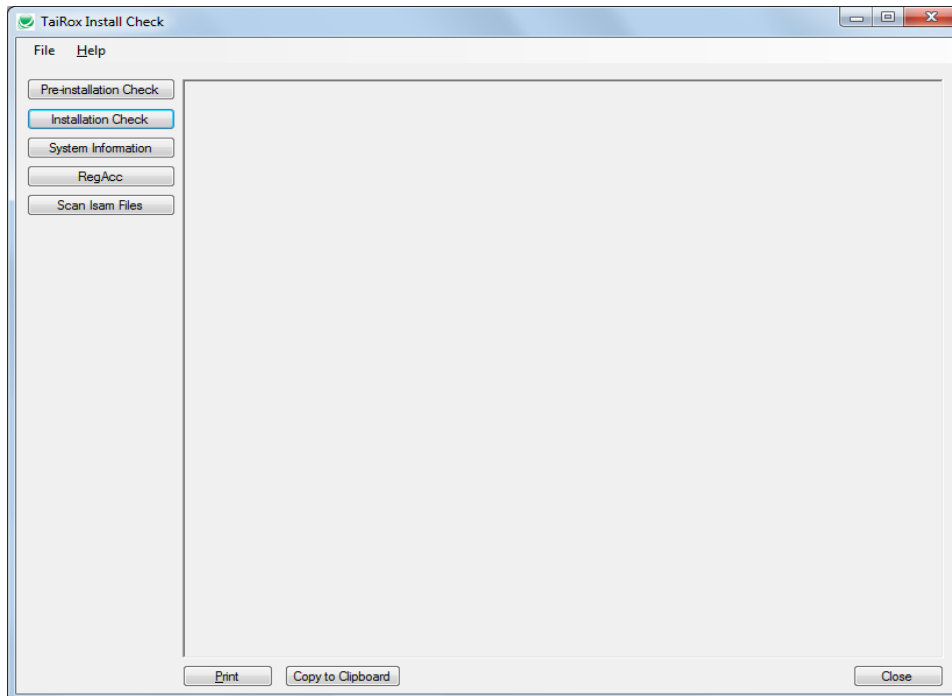
Downloading and Starting Install Check

To download and use Install Check:

- Download Install Check from here: <http://tairox.com/install-check-for-sage-300-erp-accpac.html>
The download is a zipped-up EXE file.
- Unzip and run the EXE.
- Accept the terms of the license.
- Click the Installation Check & System Information buttons to get a snapshot of your Sage 300 environment.
- Copy the results to the clipboard, save in a Word document and analyze, paying particular attention to any red messages.
- If you have a log file from a TaiRox program that shows a problem, review the log files as well.
- If you can recreate a problem in a known environment, we can check out what might be happening in a matching environment with our developer tools present.

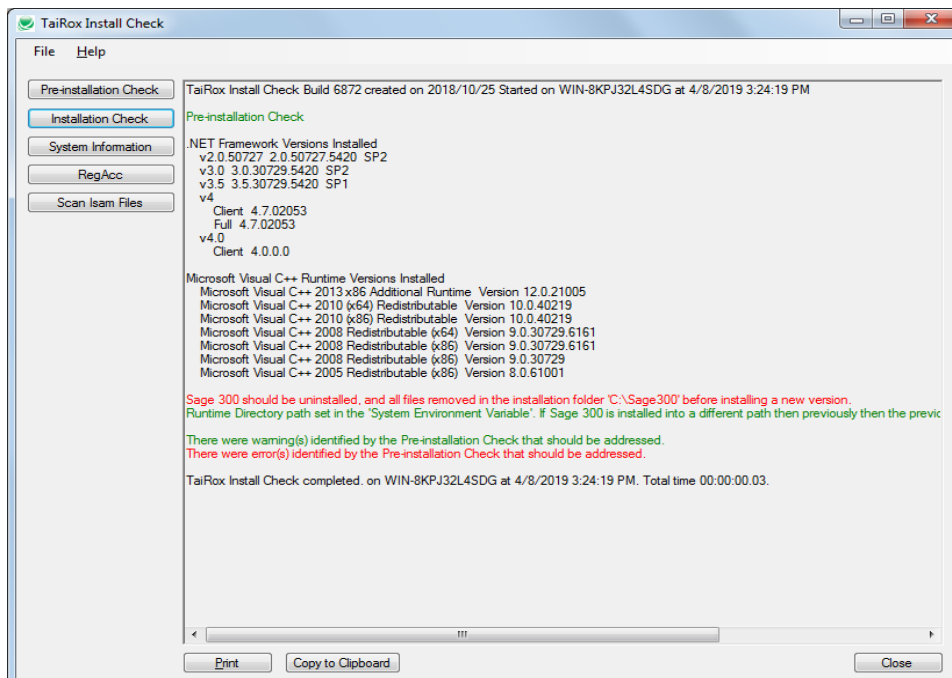
Running Install Check

When the program starts, the following form appears, showing 5 possible operations.



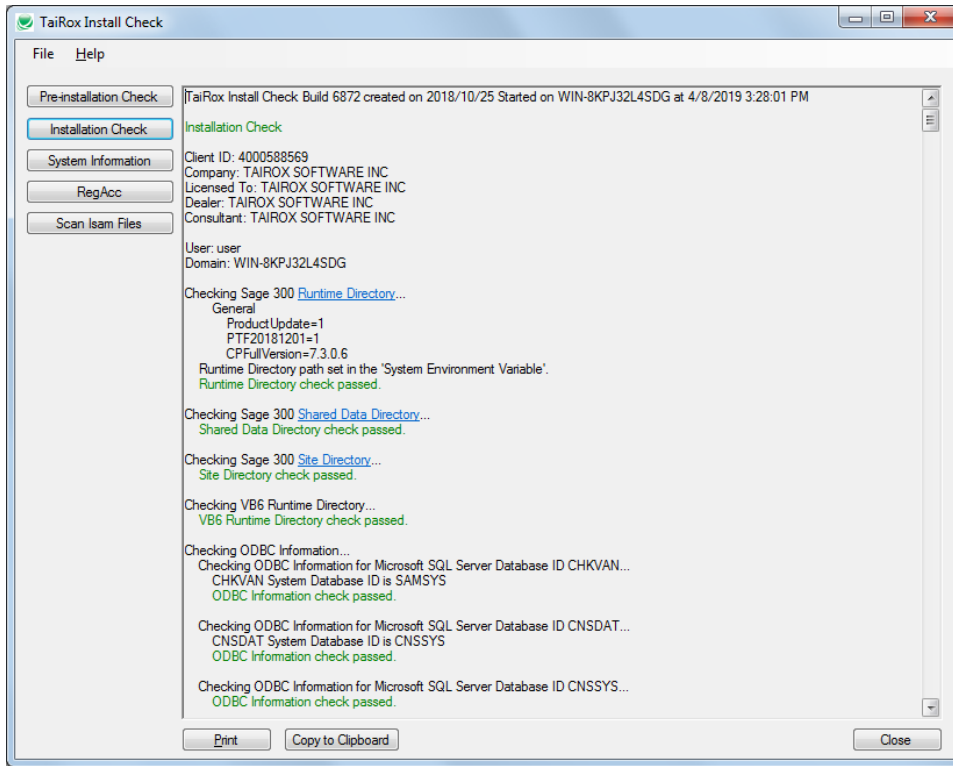
Pre-installation Check Button

Click the Pre-installation Check button to produce a log similar to the following. You may be reminded to uninstall an existing version. You will be alerted if User Account Control (UAC) is turned on.

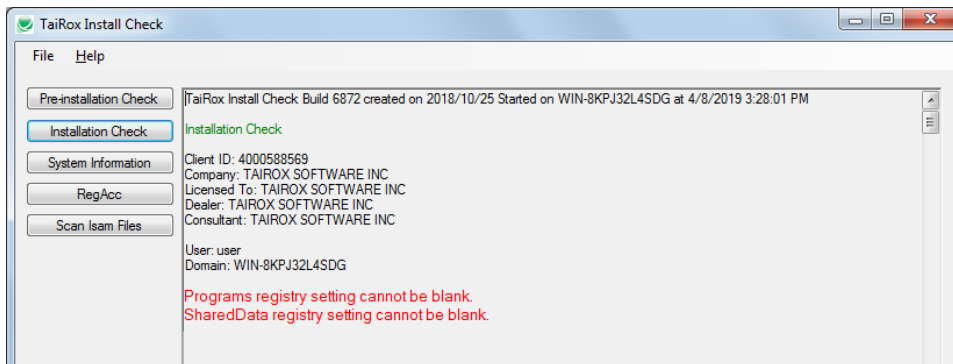


Installation Check Button

Click the Installation Check button to produce a log similar to the following. Successful tests show in green, failures in red, clickable links in blue. A successful test looks like:



If Sage 300 is not installed at all, or registry entries are missing, a test looks more like this:



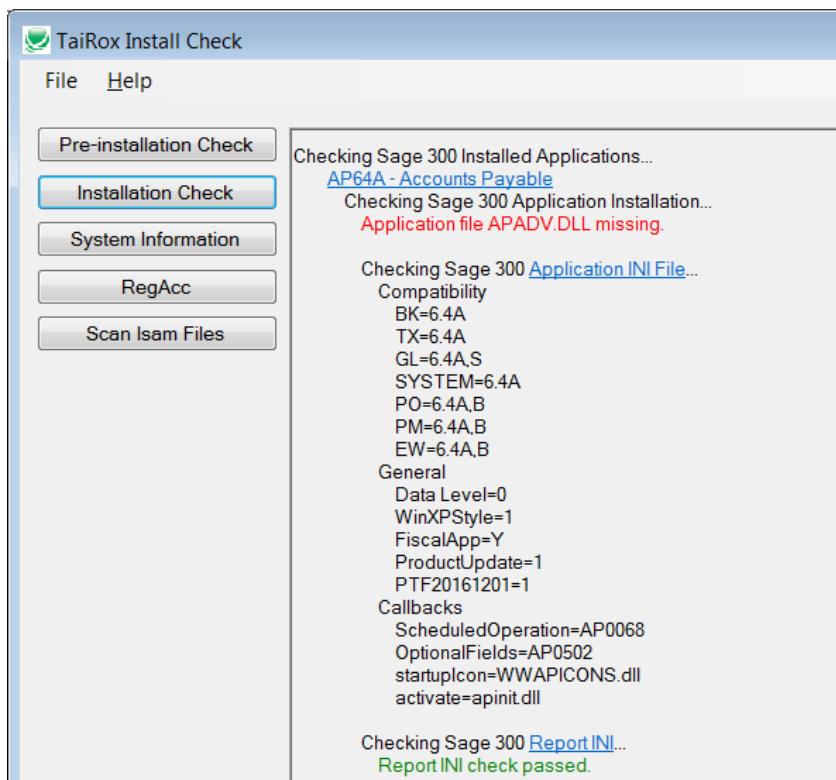
What Gets Checked

The following table summarizes for each Sage 300 category whether or not detailed information is provided by install Check, what checks are performed, and all clickable links to directories that are provided.

| Category | Details | Checks | Links |
|-----------------------|---------|--------|-------|
| License Information | Yes | - | - |
| Runtime Directory | Yes | Yes | Yes |
| Shared Data Directory | - | Yes | Yes |

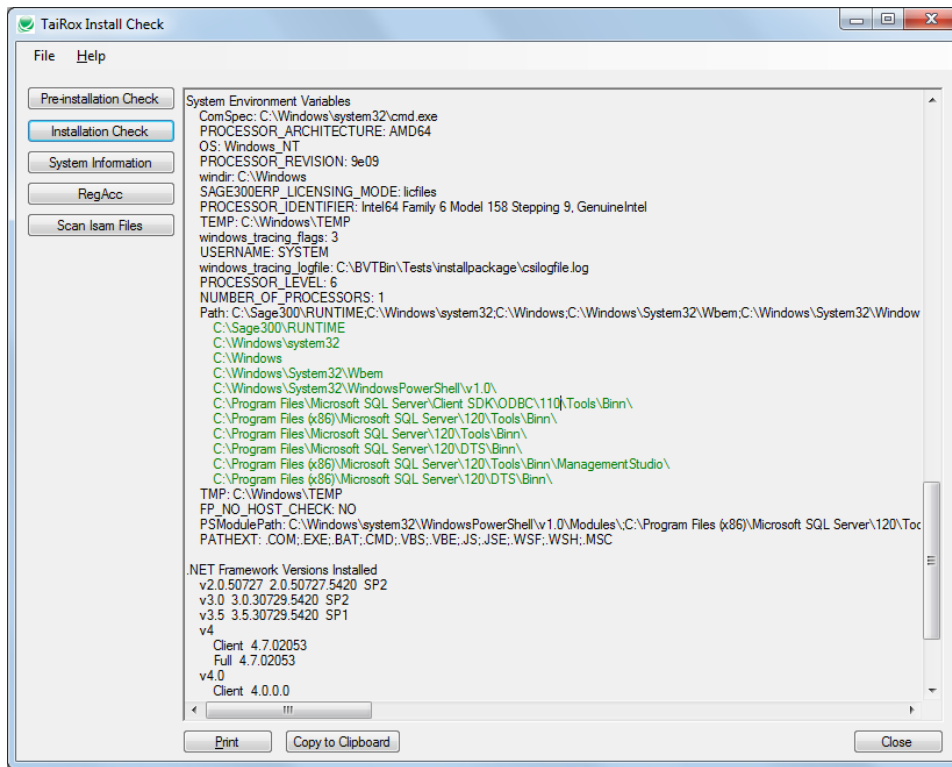
| Category | Details | Checks | Links |
|-----------------------------|---------|--------|-------|
| Site Directory | - | Yes | Yes |
| All ODBC Connections | Yes | Yes | - |
| SQL Server Collation | Yes | - | - |
| All TaiRox DLLS | - | Yes | Yes |
| All TaiRox INI Files | Yes | Yes | Yes |
| All TaiRox Product Versions | Yes | - | - |
| All TaiRox Licenses | Yes | Yes | Yes |
| All TaiRox Log Files | - | - | Yes |
| All Sage 300 DLLS | - | Yes | Yes |
| All Sage 300 INI Files | Yes | Yes | Yes |
| Third Party SDK DLLS | - | Yes | Yes |
| Third Party SDK INI Files | Yes | Yes | Yes |

For example, if a Sage 300 Accounts Payable DLL (APADV.DLL) is missing from Sage 300's program directory, the Accounts Payable section of the log might look like the following picture. This situation could arise when anti-malware software incorrectly quarantines programs.



System Information Button

Click the System Information button to display environmental information. Path variables are checked to see that the path actually exists. All good paths are displayed in **green**.

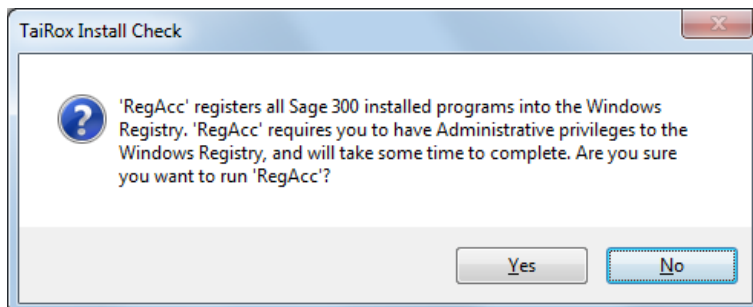


The following information is detailed when the System Information button is pressed:

| Information | Checks |
|------------------------------|--------|
| Sage 300 Registry Settings | - |
| User Environment Variables | - |
| System Environment Variables | - |
| Path | Yes |
| .NET Framework | - |

RegAcc Button

Click the RegAcc button to run the RegAcc program that ships with Sage 300. The program will display a warning before it proceeds.

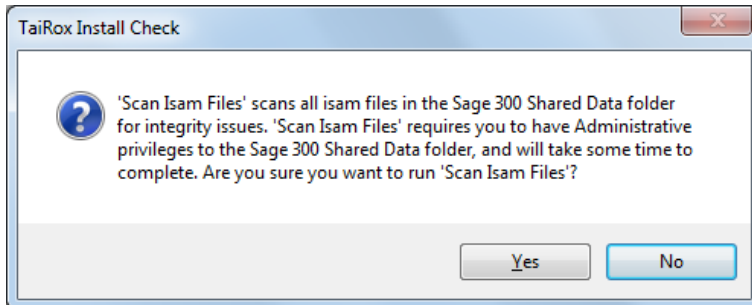


The operation will take a few minutes to complete, and will end with a message indicating that a log file has been produced. The program navigates the Sage 300 programs directory and registers all EXE, DLL and OCX files. Note that because end-users may not have sufficient registry permissions, an admin user will probably need to register all of the programs prior to turning the workstation over to the end-user.

Scan ISAM Files Button

This function scans all Sage 300 ISAM files (indexed sequential access method).

When you click the Scan Isam Files button, the program displays the following warning:



When you click the Yes button, the following dialog will be displayed, giving you the option to specify one file or check all ISAM files. Click Scan to scan all ISAM files.

