

# Fix Item Valuation Errors

Fix Item Valuation Errors is a data repair tool used by consultants to correct errors that can arise in Sage 300 Inventory Control tables and are reported by the data integrity checking program.

The tool will check ranges of item numbers and locations for the Item Valuation error reported by the data integrity checker. Errors are reported when the sum of the quantities and/or costs in the valuation rows do not add up to the total in the location row. This error can arise with some versions of Sage 300.

If any errors are reported, press the Fix button to repair the data.

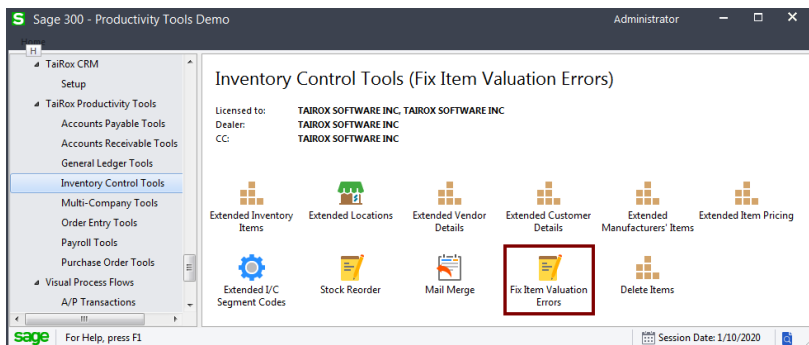
The Fix button creates a valuation entry that is the difference between the total kept in the ICILOC table and the sum of valuation entries in the ICIVAL table.

Before running "Fix", enter the Transaction date, year and fiscal period that you want for the "Fix" entries.

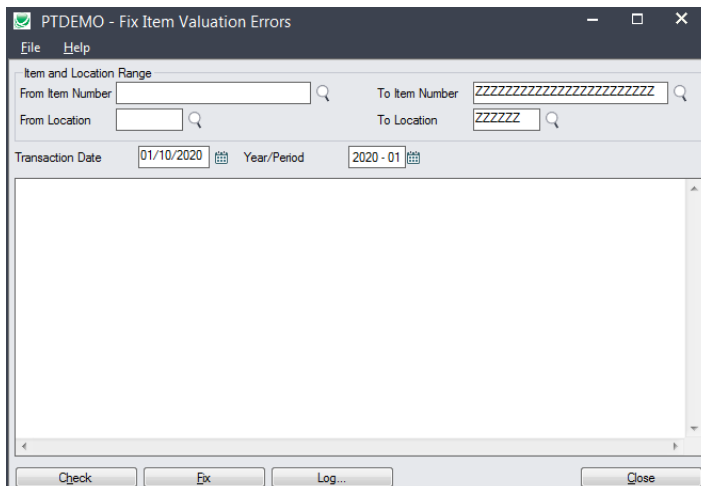
The program keeps a log of all changes.

## Using Fix Item Valuation Errors

The Fix Item Valuation Errors icon appears under **TaiRox Productivity Tools > Inventory Control Tools** on the Sage 300 desktop and can be copied to other menu locations.



The Fix Item Valuation Errors form appears as follows:



**Specify the Item and Location Range for running the utility:**

- Fix Item Valuation Errors checks the range of item numbers and locations for the Item Valuation error reported by the data integrity checker.  
Errors are reported when the sum of the quantities and/or costs in the valuation rows do not add up to the total in the location row.

**Specify the transaction date for new “Fix” valuation entries:**

- Enter the Transaction date, year and fiscal period that you want for the “Fix” entries.

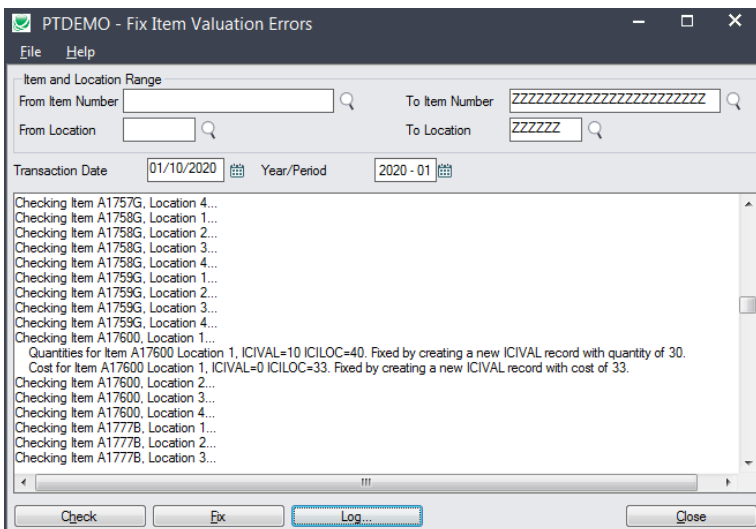
**Run the utility using the “Check” button first**

- The program displays each item and location when it checks them.

**Run the utility using the “Fix” button to fix valuation errors**

- If Check displays any errors, confirm the transaction date that you entered, and click the Fix button. Fix button will repair the data by creating new valuation rows.
- All changes are logged by the program.

Fix Item Valuation Errors creates a valuation entry that is the difference between the total kept in the ICILOC table and the sum of valuation entries in the ICIVAL table using the transaction date, year and fiscal period entered on the form.



**Click the Log button to confirm which fixes were made:**

```
7/25/2020 2:09:46 PM Fix Item Valuation Errors complete.
7/25/2020 2:09:52 PM PTDEMO - Fix Item Valuation Errors
7/25/2020 2:09:52 PM
7/25/2020 2:09:52 PM Performed by user: ADMIN
7/25/2020 2:09:52 PM
7/25/2020 2:09:52 PM Fix Only
```

