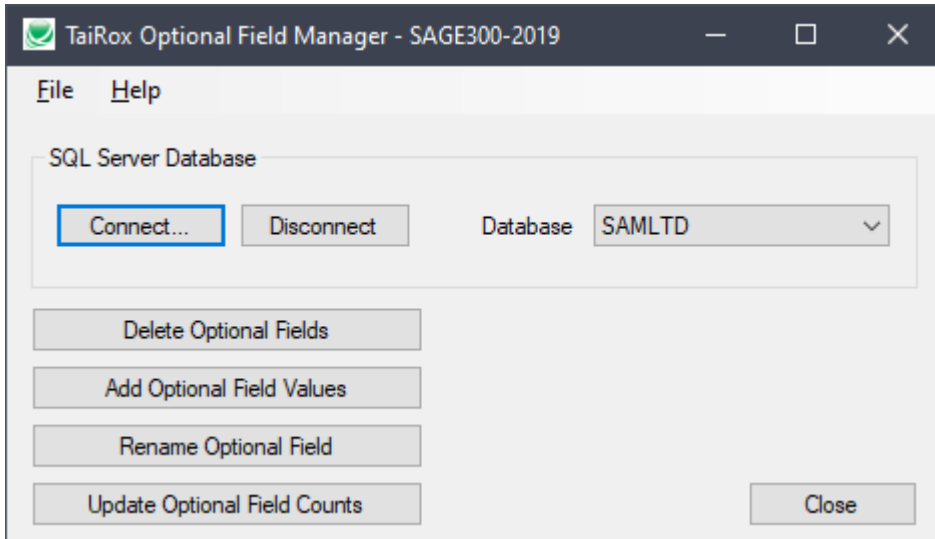
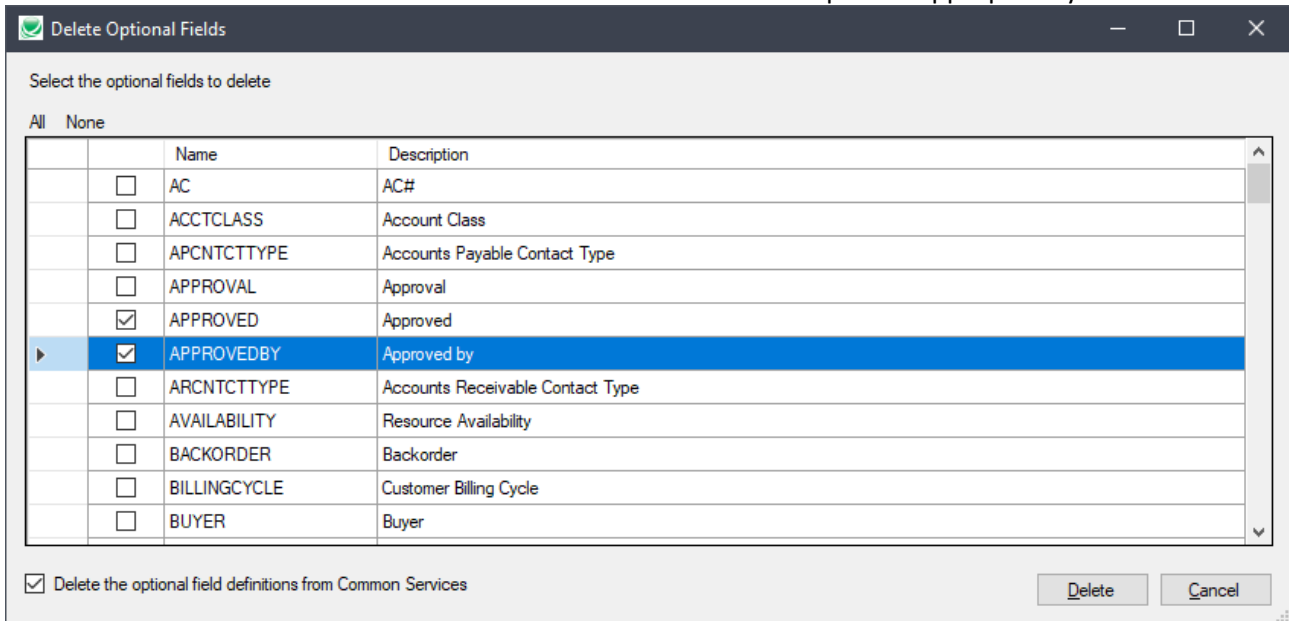


Optional Field Manager for Sage 300

Available for \$795 + \$200 per year, Optional Field Manager performs operations on Sage 300 optional fields: Delete Old Optional Fields, Add Optional Field Values, Rename Optional Fields, and Update Optional Field Counts. Watch overview: <https://vimeo.com/605848860>



Delete Old Optional Fields. Delete fields that are no longer required from a Sage 300 database. A selected optional field will be completely deleted from all tables with an option to remove the optional field definition from common services. Rows are deleted and counts are updated appropriately.



Optional Field Manager for Sage 300

Add Optional Field Values. When an optional field is added in Sage 300, table rows are not populated with an initial or default value. If the optional field is required, some operations cannot be performed until a value is present. This operation provides such a value for all rows in a table or tables without affecting existing values. This operation is available for master file and setup tables, not for transaction tables.

Optional Field

FINISH - Outer Finish Type Text Length 20

Value

Polished Brass

Tables

		Location	Table
<input checked="" type="checkbox"/>		Items	ICITEMO - Item Optional Fields

Rename Optional Fields. Change the name or description of an optional field in all tables.

Optional Field to Rename

AC - AC# Type Text Length 15

New Optional Field Name

ACCOUNT

New Optional Field Description

ACC#

Process Cancel

Update Optional Field Counts. Repairs a database inconsistency (integrity error) that can occur when one of the optional field counts does not match the number of actual records containing the optional field.

Select the Applications to update

All None

		Application	Name
<input checked="" type="checkbox"/>		AP	Accounts Payable
<input checked="" type="checkbox"/>		AR	Accounts Receivable
<input type="checkbox"/>		CP	Canadian Payroll
<input type="checkbox"/>		GL	General Ledger
<input checked="" type="checkbox"/>		IC	Inventory Control
<input type="checkbox"/>		MT	Multiple Contacts
<input type="checkbox"/>		OE	Order Entry
<input type="checkbox"/>		PM	Project and Job Costing