

## Fast DBTools for Sage 300

Available for \$795 + \$200 per year, Fast DBTools launches programs from an interactive console that are **faster** and **safer** than the standard utilities, as well as unique, time-saving tools not otherwise available. Databases are displayed in a sortable, Sage 300-centric grid with Collation, Recovery Model and Log Space Available columns. Watch an overview: <https://vimeo.com/605847698>

Read: [Reindexing Sage 300 Tables](#) and boost Sage 300 performance.

"As if you need further testimonials ... Load complete in 1:20 ... a 40 GB database, had taken 4.5 hours" **Scott A. Schreiner, Axis Integrated Solutions.**

"the little touches ... are so valuable ... a database dump ... nicely warns the user when there are SQL views in the database" **Mark Binkley, DataQuest, Inc.**

**\*New\*** A Fast DBLoad operation is now 5x faster (was 3x faster) - and uses much less disk space. This is accomplished by turning off transaction logging during a DBLoad. Wrapping each table in a transaction has no benefit as a successful DBLoad operation must load a complete database.

### Do it Faster

The screenshot shows the TaiRox Fast DBTools application. The left pane displays a tree view of databases under 'localhost [2017SAGE300]', including APPROVAL, CHKSEA, CHKVAN, CPYINC, CPYLTD, ORCIN2, ORCIN3, ORCIN4, ORCLTD, ORCSYS, PORTAL, PTCOPY, PTDEMO, SAMINC, SAMLTD, and SAMSYS. The right pane shows server details for 'localhost' with Server Name '2017SAGE300', Product 'Microsoft SQL Server 2014 Standard Edition (64-bit) (SP2)', Version '12.0.5203.0', and Default Collation 'SQL\_Latin1\_General\_CP1\_CI\_AS'. Below this is a table of database statistics:

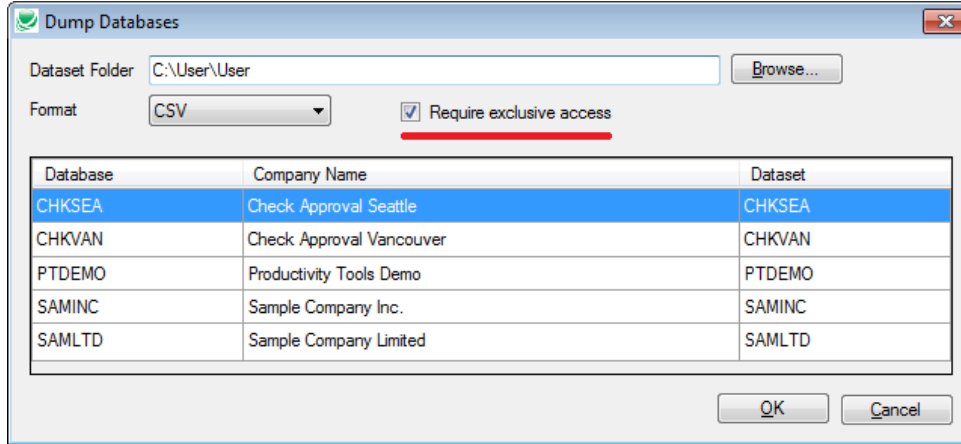
Database	Collation	Recovery Model	Data File Size (MB)	Data Space Available (MB)	Log File Size (MB)	Log Space Available (MB)
PTCOPY - Productivity Tools Demo	Latin1_General_BIN	Simple	112.19	3.67	180.06	163.50
PTDEMO - Productivity Tools Demo	Latin1_General_BIN	Simple	115.00	3.39	109.75	106.09
CPYINC - CPYINC	Latin1_General_BIN	Simple	50.00	0.44	56.31	54.28
CPYLTD - CPYLTD	Latin1_General_BIN	Simple	32.00	4.27	51.19	48.11
CHKSEA - Check Approval Seattle	Latin1_General_BIN	Simple	105.19	0.23	47.25	45.44
CHKVAN - Check Approval Vancouver	Latin1_General_BIN	Simple	105.19	0.30	47.25	45.25
SAMINC - Sample Company Inc.	Latin1_General_BIN	Simple	98.00	0.73	31.69	29.60
SAMLTD - Sample Company Limited	Latin1_General_BIN	Simple	96.00	0.25	5.06	4.17
ORCIN3	Latin1_General_BIN	Simple	4.00	1.71	1.50	1.04

The bottom pane shows a 'Tasks' table with columns for ID, Status, Duration, Progress, Message, and Description. It lists four tasks: 1. Running (Exporting data from OEINVHO...), 2. Running (Exporting data from GLPJDO...), 3. Pending (Dumping localhost...SAMINC to C:\Users\user\Desktop\SAMINC.DCT), and 4. Pending (Dumping localhost...SAMLTD to C:\Users\user\Desktop\SAMLTD.DCT).

- **DBLoad 5-6 times faster than with the standard utility.** Fast DBTools uses SQL Server's BULK INSERT statement to achieve this performance gain.
- **DBDump dozens of databases in one multi-threaded step.** Select the databases and walk away. No need for repetitive login and logout operations.
- **Copy databases from one SQL instance to another.** Save 40% of the time by combining Fast DBDump and DBLoad operations.
- **Reindex large tables without locking out users.** Improve Sage 300 performance for medium and large databases.

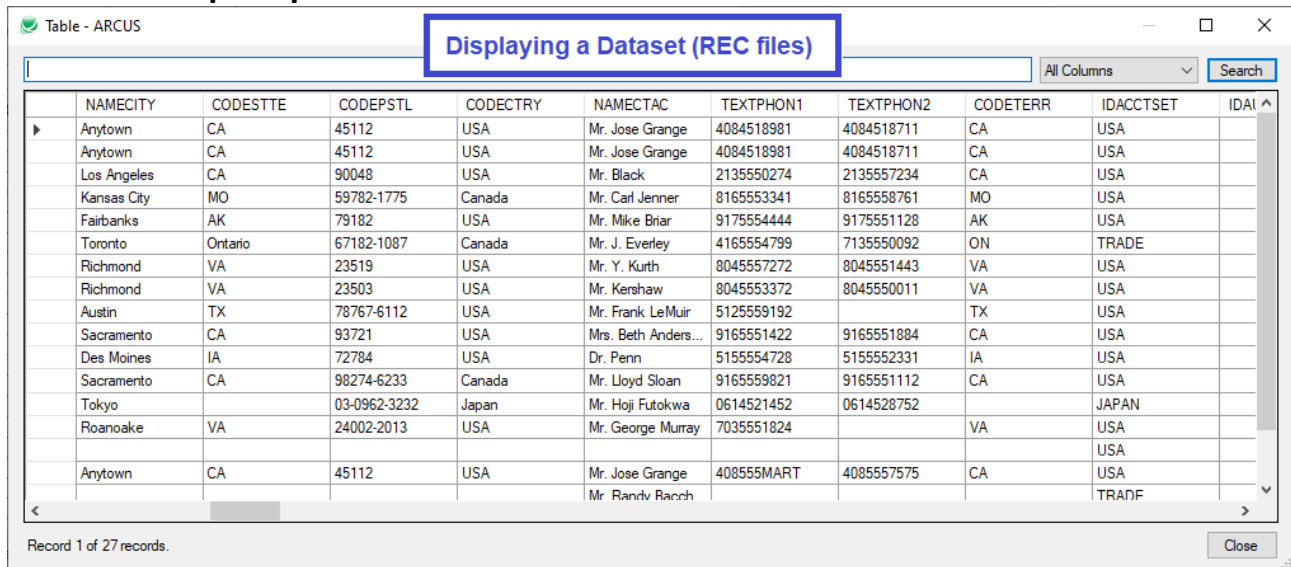
## Fast DBTools for Sage 300

### Do It Safer



- **DBDump with exclusive access to a database.** A dumped database may not be consistent if users are able to enter data during the dump.
- **Record the collation sequence with a DBDump dataset.** If a user tries to load a dataset into a database that has a different collation, a warning will be presented.
- **Be warned if there are non-Sage 300 table changes.** Stored procedures, views, triggers, extra tables and extra columns are not saved in a DBDump dataset.

### Perform Unique Operations



- **DBDump files in either a REC or CSV format.** CSV files can be edited and reloaded using Fast DBTools' DBLoad utility.
- **Deactivate modules, clearing all the relevant tables.** Modules are referenced in more tables than Sage's CSAPP table.
- **Display REC files without loading them into a database.** Find what's in a dataset without loading it.
- **Create or Delete a Sage 300 database in one step.** Avoid complex SQL Server and Database Setup utilities. Creation uses an existing Sage 300 database as a model.