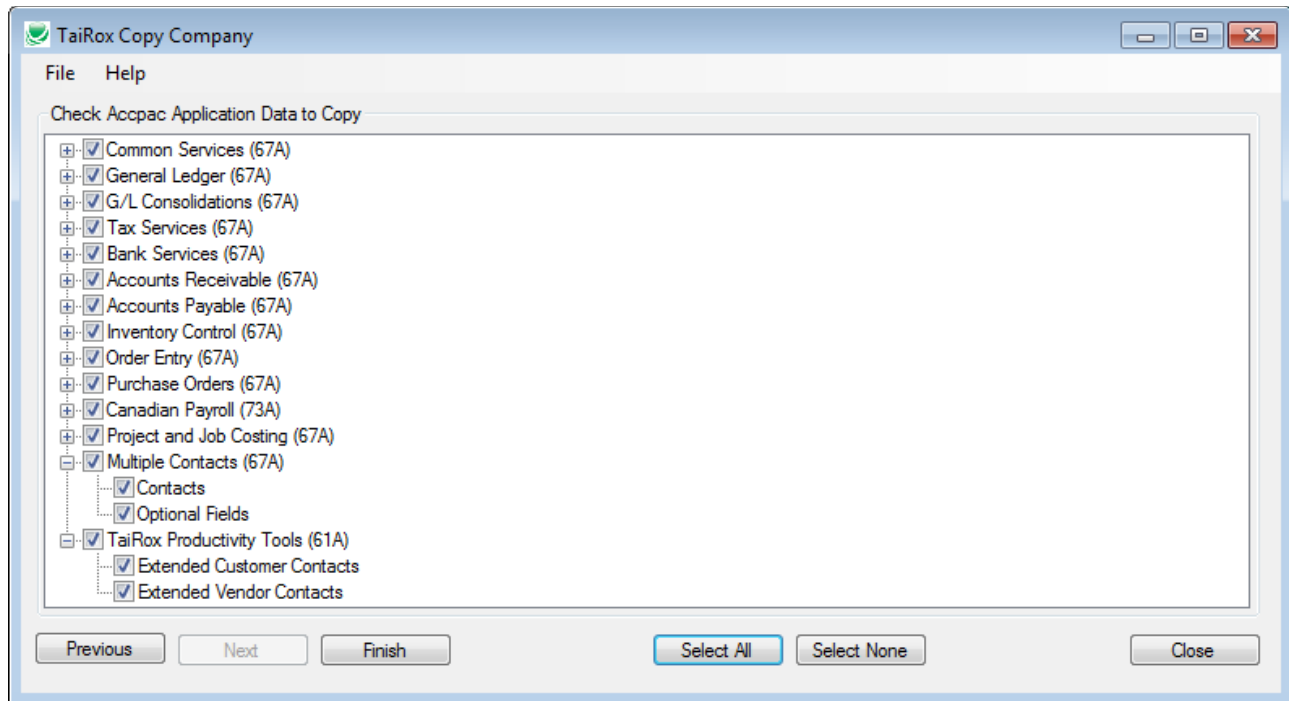


Copy Company for Sage 300

Available for \$795 + \$200 per year, Copy Company will copy an existing company's structure without copying transactional data, flawlessly performing many hours of manual manipulation with one push of a button. Copy general ledger accounts, customers, vendors, inventory items, employees, recurring entries and financial and operational setup options. Support for 2020.1 and later versions includes the ability to copy multiple contacts. Watch a Copy Company Demonstration: <https://vimeo.com/605843389>

New Support is added for Sage 300 2022.



Features and Benefits

- Uses any existing Sage 300 company as a template to create new companies with a few clicks. Avoid dozens of export and import operations. Avoid manual reordering of export files.
- Copies setup options that cannot be exported or imported.
- Handles General Ledger account allocations using a multi-pass approach.
- Handles Payroll deductions of deductions using a multi-pass approach.
- Supports the copying of G/L Integration settings to a live database.
- Provides a recipe in the user guide for changing a company's functional currency.
- Uses Sage 300 business objects to ensure that valid database tables are created.

Platform Requirements

- Sage 300 2021 to 2022: A single executable program works with all platforms
- **Note that** on some older versions of Sage 300, Copy Company requires 2 Lanpaks, as it accesses 2 companies during its operation.