



# Install Check

# User Guide

## **Important Notice**

TaiRox does not warrant or represent that your use of this software product will be uninterrupted or error-free or that the software product can be run with any other version of Sage ERP Accpac other than 5.6A, 6.0A, or any version of Sage 300 other than 2012, 2014, 2016 or 2017 or that the information in this document is completely accurate. TaiRox warrants that any media by which you have received this software is free from defects. TaiRox will replace any such defective media. TaiRox expressly disclaims all other warranties, representations, conditions and guarantees of any kind including, but not limited to warranties for merchantability or fitness for a particular use.

# Install Check User Guide

## Summary

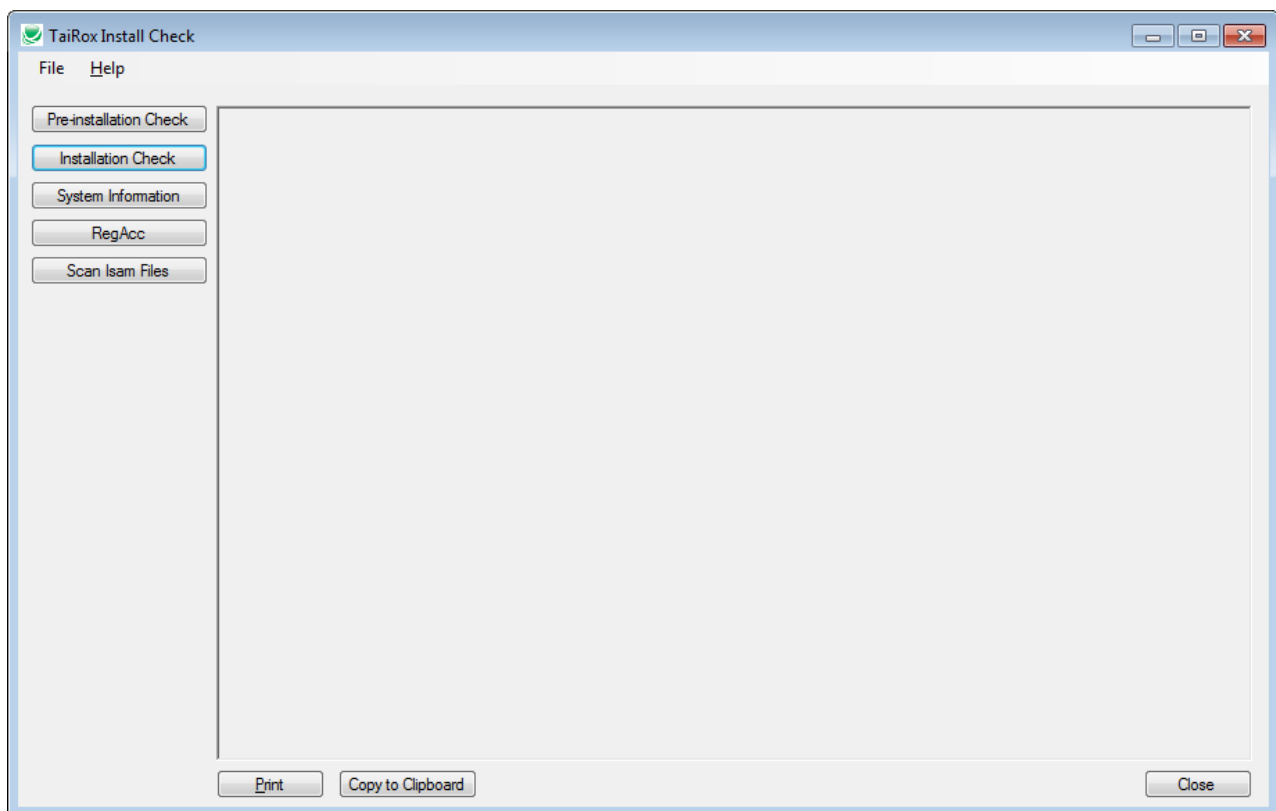
Install Check is a program that checks the environment of a computer running Sage 300. If the environment is not correct, some or all functions in Sage 300 and third party applications may not operate correctly. Install Check is provided as an executable file and leaves no footprint: does not install, does not change the Windows registry and does not require a license. Functions are provided to print or copy the information to the Windows clipboard. For convenience, access is provided to standard Sage 300 utilities that register all Sage 300 controls ("RegAcc") and that scan ISAM files ("Scan Isam").

**Why Did TaiRox Write Install Check?** Install Check enables us to provide better support for TaiRox products, which can involve supporting Sage 300 core functions that our products use. Install Check collects a comprehensive list of diagnostic information relevant to Sage 300, TaiRox and other third party SDK applications

**Why Is Support Becoming More Difficult?** Malware threats are increasing. Windows security features are becoming more complex and difficult to understand. Anti-malware programs are becoming more aggressive at quarantining files. Windows registry access is being blocked more frequently. We wanted to write a program to specifically check Sage 300 environments.

## Running Install Check

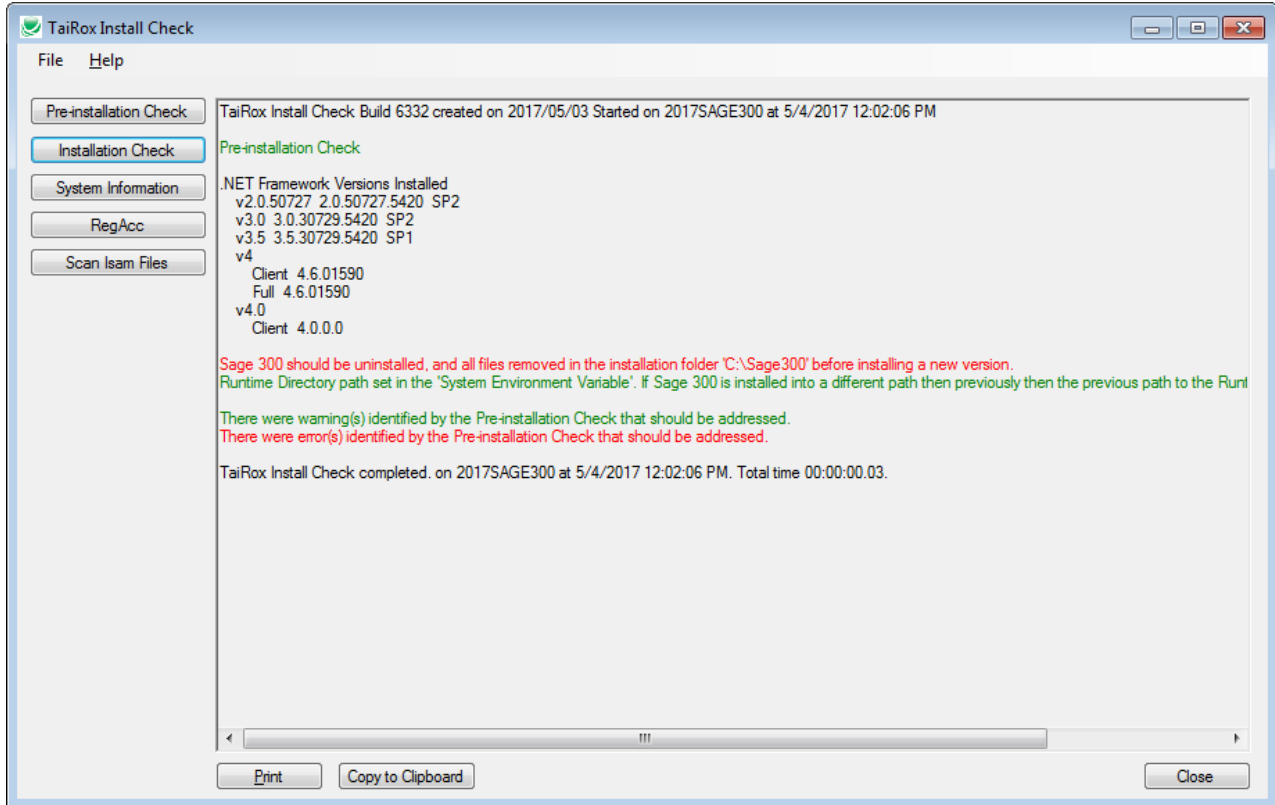
When the program starts, a form is presented with 5 operations available.



# Install Check User Guide

## Running Install Check - Pre-installation Check Button

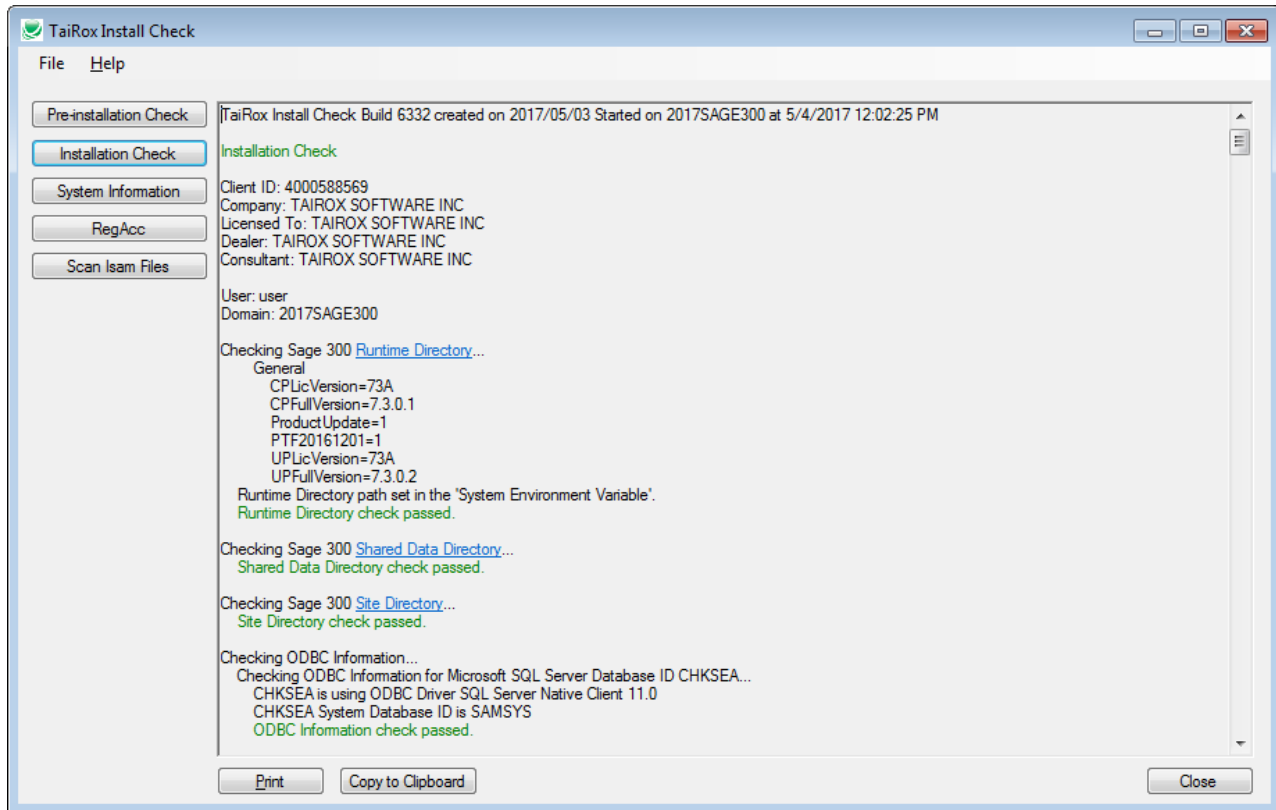
Clicking on the Pre-installation Check button will produce a log similar to the following. You may be reminded to uninstall an existing version. You will be alerted if User Account Control (UAC) is turned on.



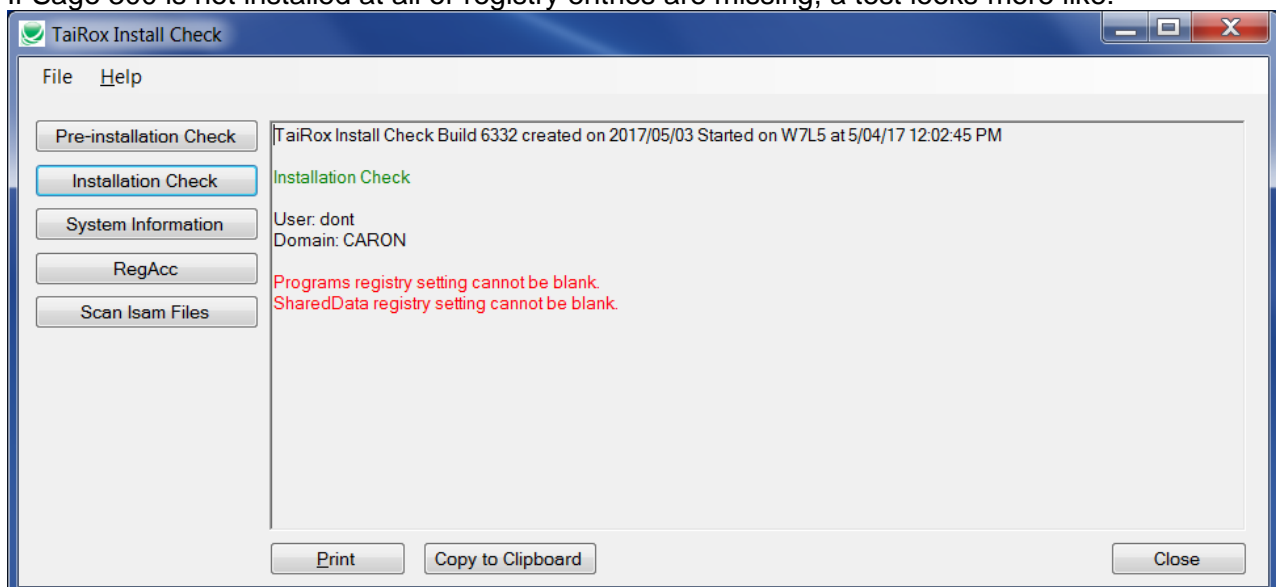
# Install Check User Guide

## Running Install Check - Installation Check Button

Clicking on the Check button will produce a log similar to the following. Successful tests show in **green**, failures in **red**, clickable links in **blue**. A successful test looks like:



If Sage 300 is not installed at all or registry entries are missing, a test looks more like:



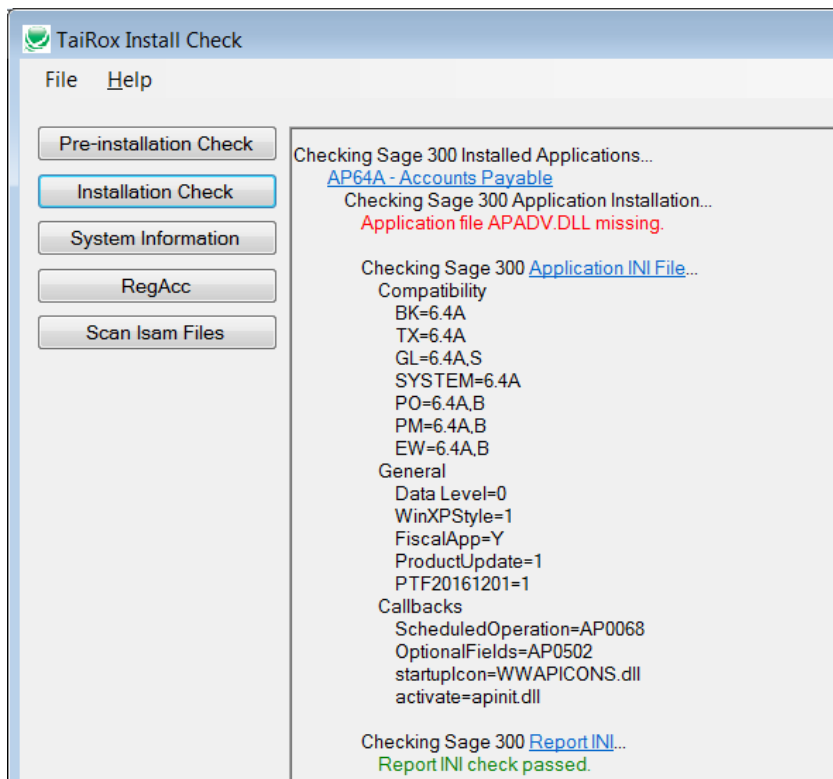
# Install Check User Guide

## Running Install Check - Installation Check Button

The following table summarizes for each Sage 300 category whether or not detailed information is provided, accessibility checks are performed and clickable links to directories are provided.

Category	Details	Checks	Links
License Information	Yes	-	-
Runtime Directory	Yes	Yes	Yes
Shared Data Directory	-	Yes	Yes
Site Directory	-	Yes	Yes
All ODBC Connections	Yes	Yes	-
SQL Server Collation	Yes	-	-
All TaiRox DLLS	-	Yes	Yes
All TaiRox INI Files	Yes	Yes	Yes
All TaiRox Product Versions	Yes	-	-
All TaiRox Licenses	Yes	Yes	Yes
All Sage 300 DLLS	-	Yes	Yes
All Sage 300 INI Files	Yes	Yes	Yes
Third Party SDK DLLS	-	Yes	Yes
Third Party SDK INI Files	Yes	Yes	Yes

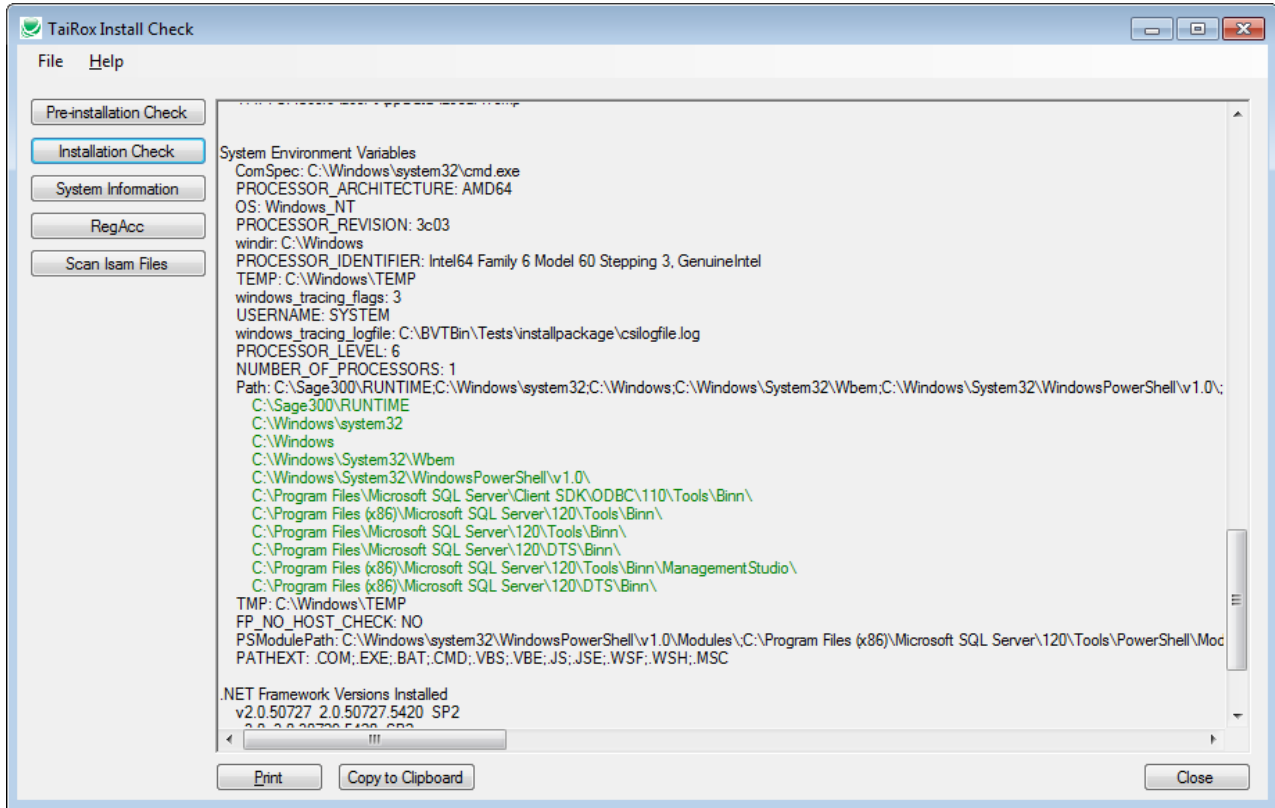
For illustration, if a Sage 300 Accounts Payable DLL (APADV.DLL) is missing from Sage's program directory, the Accounts Payable section of the log would look like the following picture. This situation could arise when anti-malware software incorrectly quarantines programs.



# Install Check User Guide

## Running Install Check - System Information Button

Clicking on System Information button will display environmental information. Path variables are checked to see that the path actually exists. If so, the path will be displayed in **green**.



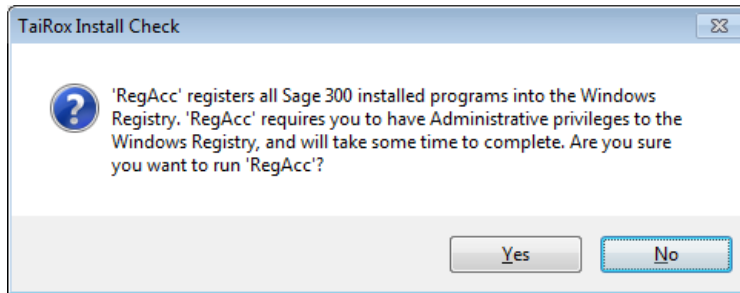
The following information is detailed when the System Information button is pressed:

Information	Checks
Sage 300 Registry Settings	-
User Environment Variables	-
System Environment Variables	-
Path	Yes
.NET Framework	-

# Install Check User Guide

## Running Install Check - RegAcc Button

Clicking on the RegAcc button runs the RegAcc program that ships with Sage 300. A warning is presented before this proceeds.

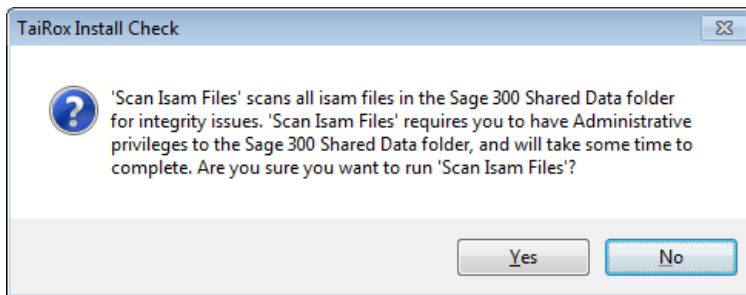


The operation will take a few minutes and will end with a message indicating that a log file has been produced. The program navigates the Sage 300 programs directory and registers all EXE, DLL and OCX files. Note that end-users may not have sufficient registry permissions and an admin user will need to register all of the programs prior to turning the workstation over to the end-user.

# Install Check User Guide

## Running Install Check - Scan Isam Files Button

Clicking on the Scan Isam Files presents a warning:



A yes response will cause the following dialog to be presented, which gives you options to check one or all ISAM files:

