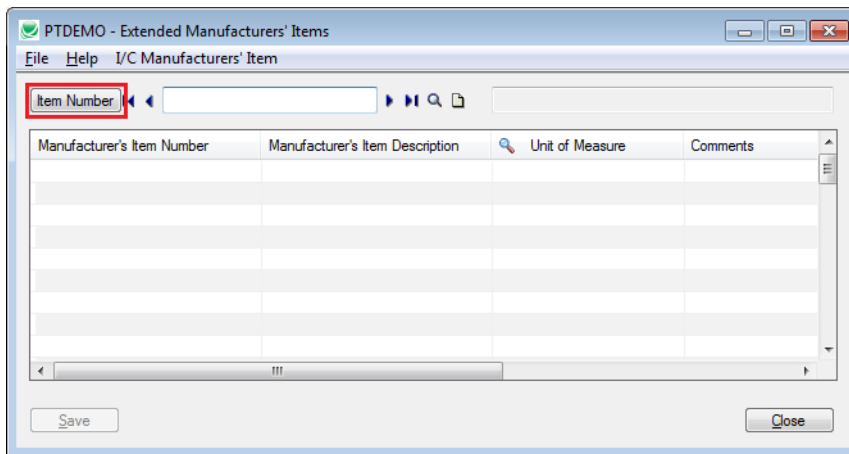


TaiRox Productivity Tools User Guide

Extended Manufacturers' Items - SmartFinder

The SmartFinder is launched from the button that has replaced the label on a standard form.



Searching: Enter a few word fragments in the entry field and the items table will be searched. Many fields will be searched simultaneously. All of the word fragments must be present in one of the fields being searched.

Display: When you click on a row in the top grid, the bottom grid will display all of the manufacturers' item numbers that are in use by that item.

Selection: Selecting from the top grid will enter the item number into the standard form. Selecting from the bottom grid will enter both the item number and the manufacturers' item number into the standard form.

