

Delete BOMs

Delete BOMs lets you safely delete multiple bills of material from Inventory Control in a single process.

Sage 300 lets you delete individual bills of material using the Bills of Material screen, and it lets you delete inactive BOMs using Delete Inactive Records. However, neither method provides the control and efficiency of Delete BOMs.

Delete BOMs lets you:

- Select ranges of BOMs by item number, BOM number, unit of measure, start date, end date, status, or date inactive. You can select ranges using up to seven fields – or you can import a list of the BOMs that you want to delete.
- Specify additional selection criteria using BOM fields.
- Load the list of BOMs from the range that you specified.
- See the status of all BOMs in the list, as well as which ones are “In Use”.
 - Even if BOM quantities are zero, BOMs can still appear in orders or historical data that has yet to be purged.
 - If a BOM is deleted when it is still referenced in other modules, the integrity checking program will flag these references as errors, and some operations in Sage 300 may not behave as expected. In addition, some reports will display incomplete or inaccurate data.
 - Delete BOMs looks through all core Sage 300 tables and known third-party tables searching for references to all BOMs matching your selection criteria, then displays all database tables that reference those BOMs in the “In Use” column.
- Cherry-pick” BOMs for deletion that are “safe-to-delete”.
- Optionally Delete BOMs individually by selecting them from the loaded list of BOMs and pressing the Delete key.
- Press a Process button to delete all selected BOMs in one step.
- View a log of all deletions after processing.

Note: You cannot delete a bill of material that is a component item (or subassembly) of a multilevel BOM.

Important Disclaimer: Delete BOMs is driven by XML files that identify Sage 300 and third-party products with the tables and columns of the products that contain inventory BOMs.

TaiRox does not guarantee that these XML files are accurate, complete or up-to-date, and that all references will be detected by Delete BOM's search.

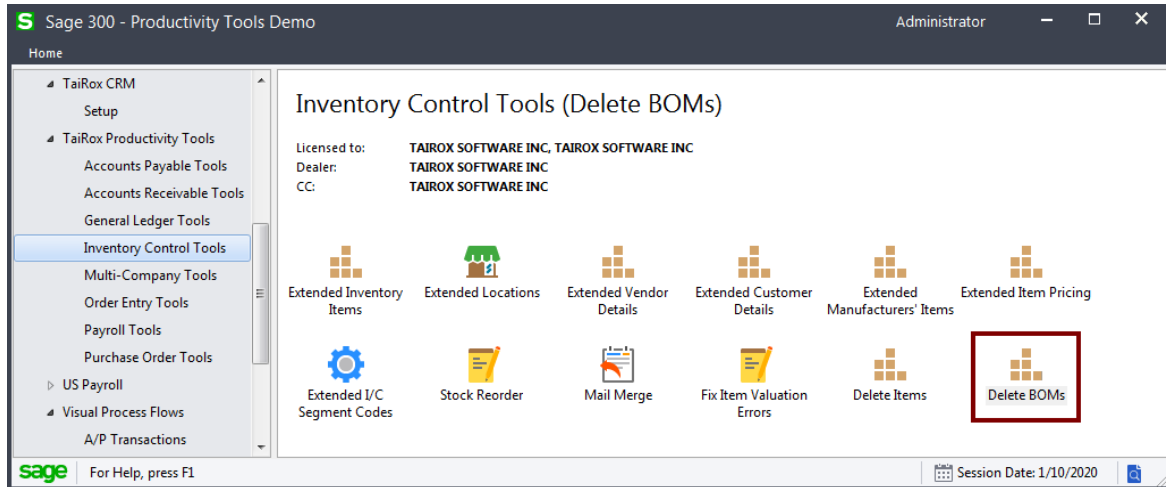
If other users are using Sage 300 when Delete BOMs is being run, the results of the search may be out-of-date as displayed. TaiRox is not responsible for any damaged or lost data as a result of using Delete BOMs. A Sage 300 Certified Consultant should be involved in any extensive deletion process so that integrity checks and other tests can be performed after deletion.

Nevertheless: Sage 300 business objects are used to delete BOMs, so the resulting database will have at least as much integrity as if a Sage 300 UI was used to delete BOMs. If a BOM has references undetected by Delete BOMs, in many cases data can be repaired by simply adding the BOM back to the database.

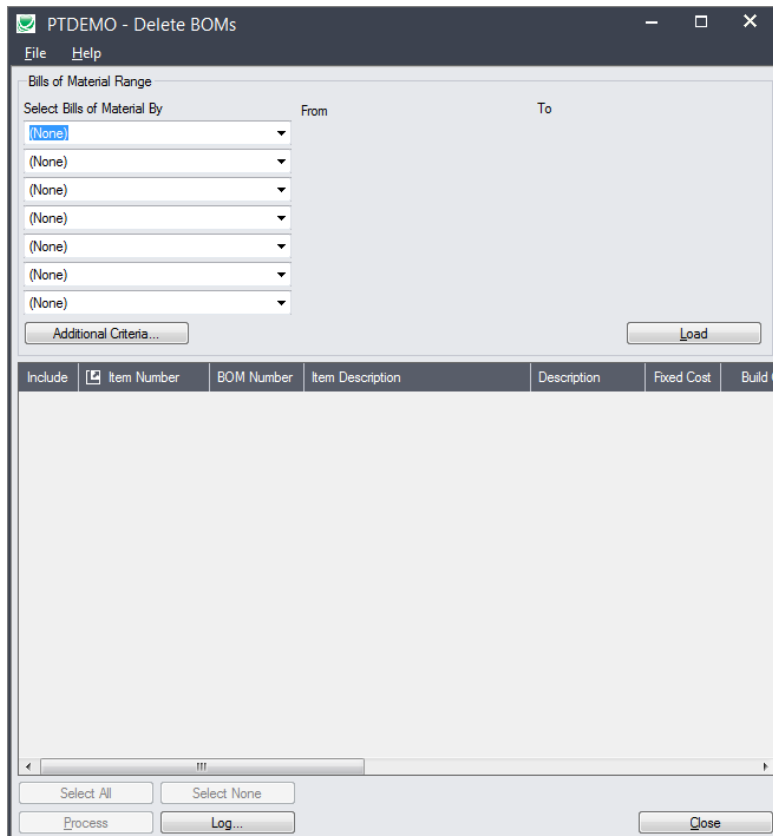
Delete BOMs creates a log of all BOMs that it deletes.

Running Delete BOMs

The Delete BOMs icon appears under **TaiRox Productivity Tools > Inventory Control Tools** on the Sage 300 desktop and can be copied to other menu locations.



The Delete BOMs screen (below) lets you select which BOMs you wish to delete by specifying a range of item numbers, BOM numbers, units of measure, start dates, end dates, status, or date inactive. You can use up to seven fields to specify ranges.



Selecting BOMs for deletion

Choose ranges of BOMs:

- You can specify ranges of BOMs to restrict them by specifying a range of item numbers, BOM numbers, units of measure, start dates, end dates, status, or date inactive. You can select ranges using up to seven fields.

For instructions on importing a list of BOMs for deletion using the **File > Import** menu choice, see [Importing a List of BOMs for Deletion](#).

Choose additional criteria:

- Click Additional Criteria to further restrict the BOMs retrieved for deletion. In this case, we are only going to load inactive BOMs.
- Click OK to save.

Load the list of selected BOMs and choose which ones to delete:

- Click the Load button to display the selected list of BOMs.

Include	Item Number	BOM Number	Item Description	Description	Fixed Cost	Build
No	F3(HUNTS-2500)T	2	Hunts 2500 Series Filing Cabinet		50.00	
No	F3(HUNTS-2500)T	3	Hunts 2500 Series Filing Cabinet		100.00	

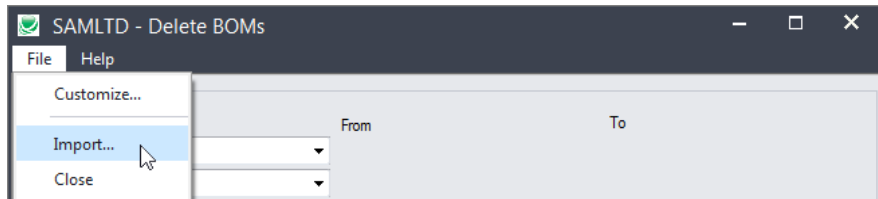
- Go back and adjust the ranges or additional criteria if necessary.
- Scroll Right or Expand the form to see additional columns of information.

Start Date	End Date	Status	Date Inactive	In Use
		Inactive	10/10/2018	Item Number in use in table ICBOMD
		Inactive	10/10/2018	Item Number in use in table ICBOMD

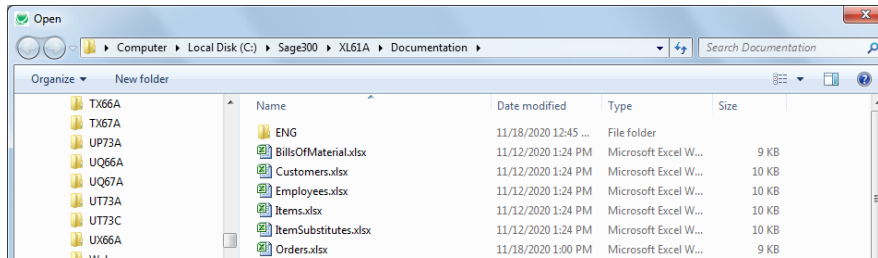
In this case, you can see that both BOMs are inactive and appear in table ICBOMD.

Importing a List of BOMs for Deletion

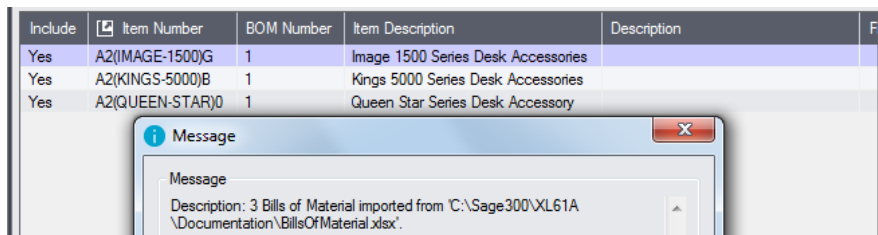
- Choose **File > Import** from the Delete BOMs menu.



- Select the list of BOMs that you want to process.



- The program will import the list and load all relevant BOMs into the grid – setting all BOMs to “Include” – and display a message stating the number of BOMs that were successfully loaded, and the number of BOMs that could not be imported.



The program will reject BOMs that cannot be processed, and will not import them.

For example, you cannot delete a bill of material that is a component item (or subassembly) of a multilevel BOM.

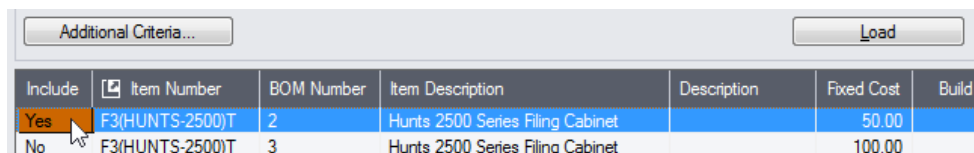
All BOMs that can be deleted will be loaded into the grid at the bottom of the screen. You can then confirm which BOMs you want to delete.

Choosing Items from the Grid for Processing

- Use the Select All and Select None buttons below the grid to set all BOMs to Yes for Include or No to exclude.



- Double-click in the Include column to “cherry-pick” from the BOMs:

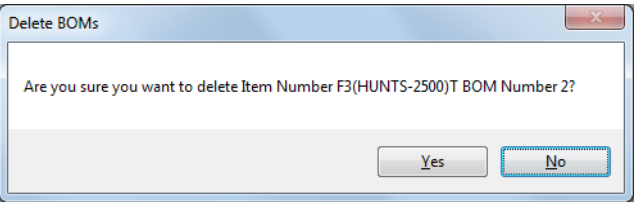


- Click the Item Number column heading to drill down on the selected BOM to confirm the details:

Include	Item Number	BOM Number	Item Description	Description	Fixed Cost	Build
Yes	F3(HUNTS-2500)T	2	Hunts 2500 Series Filing Cabinet		50.00	
No	F3(HUNTS-2500)T	3	Hunts 2500 Series Filing Cabinet		100.00	

You can also delete a BOM by selecting it and pressing the Delete key:

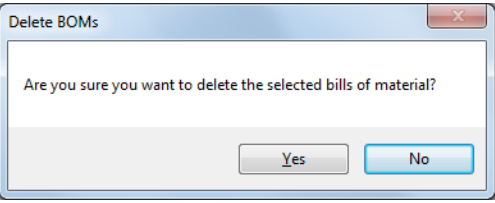
- You can also **delete** a BOM by selecting the row in the Load list and pressing the **Delete key**. When the delete key is pressed you will be prompted to confirm the deletion of that BOM.



Click the Process button to delete the included BOMs:

The program asks you to confirm your choices.

- Click Yes to continue.



Note: There can also be data-integrity errors that prevent some deletions, in which case an error message will appear.

Click the Log button to confirm which BOMs were deleted:

In this case, deletion failed because the selected BOM was a subassembly of a multilevel BOM.

```

10/10/2018 1:40:03 PM Delete BOMs started.
10/10/2018 1:40:03 PM
10/10/2018 1:40:03 PM Performed by user: ADMIN
10/10/2018 1:40:03 PM
10/10/2018 1:40:03 PM Bills of Material Range
10/10/2018 1:40:03 PM     Item Number From [F3(HUNTS-2500)T] To [ZZZZZZZZZZZZZZZZZZZZZZZZZZZZZZ]
10/10/2018 1:40:03 PM     Date Inactive From [1/1/2017] To [1/1/2019]
10/10/2018 1:40:03 PM
10/10/2018 1:40:03 PM Deleting Item Number F3(HUNTS-2500)T BOM Number 2...
10/10/2018 1:40:03 PM     Cannot delete 'item: F3HUNTS2500T, bom: 2' because it is a
component of 'item: A2IMAGE1500G, bom: 2'.
10/10/2018 1:40:03 PM
10/10/2018 1:40:03 PM Delete BOMs complete.
10/10/2018 1:40:03 PM
=====

```

The Log lists:

- The user and the range settings for the procedure.
- Each item that was deleted.
- Reason why deletion failed.

Delete BOMs XML Control File – Applications.xml

The following XML file is used to control application checking for item references.

```
<?xml version="1.0" encoding="UTF-8"?>  
<Applications xmlns:xsd="http://www.w3.org/2001/XMLSchema"  
xmlns:xsi="http://www.w3.org/2001/XMLSchema-instance">  
  <Application>  
    <Selector>IC</Selector>  
    <Name>Inventory Control</Name>  
    <Check>>true</Check>  
  </Application>  
  <Application>  
    <Selector>OE</Selector>  
    <Name>Order Entry</Name>  
    <Check>>true</Check>  
  </Application>  
></Applications>
```

File Formats for Imported BOM Lists

Delete BOMs lets you select BOMs using an imported list.

Import files are Excel files.

You can find examples of import lists in directory "...\\Sage300\\XL61A\\Documentation".

BOM Lists

The Excel Spreadsheet BOM list has two columns, with "ITEMNO" and BOMNO as the column headings in the first row.

	A	B
1	ITEMNO	BOMNO
2	A2(IMAGE-1500)G	1
3	A2(KINGS-5000)B	1
4	A2(QUEEN-STAR)0	1

Notes:

- Item numbers can be formatted or unformatted.
- All other columns are ignored. This means that you can add item descriptions and notes to your spreadsheet without affecting the file import.