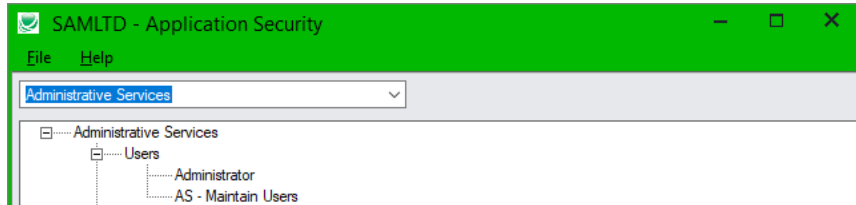


# Application Security

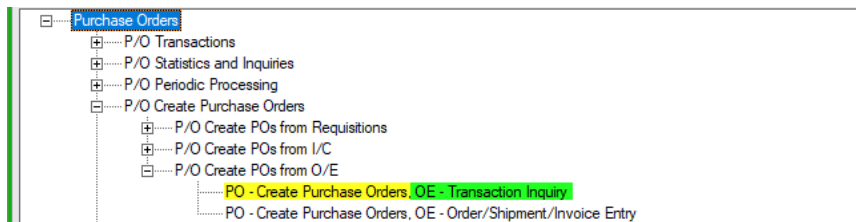
The Application Security program lets you see which security authorizations are required to see and use Sage 300 programs. It answers the question, “why don’t I see this icon on my desktop?”

For example,

- To see and use the “Users” program in Administrative Services, you must either be the Administrator user, or be a member of a security group with “AS – Maintain Users” authorizations.



- Or, to create POs from Order Entry, you require “PO – Create Purchase Orders” and either “OE – Transaction Inquiry” or “OE – Order/Shipment/Invoice Entry” permissions.



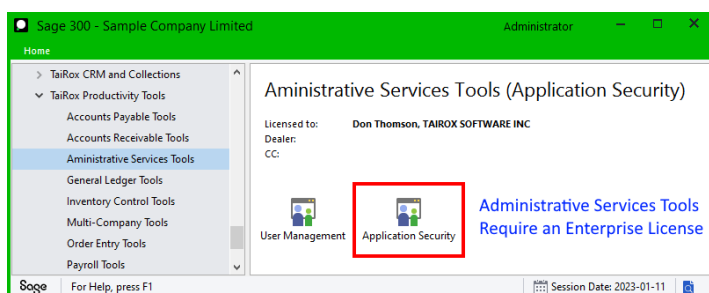
You can use the “User Management” program in the TaiRox Productivity Tools Administrative Services Tools folder to create a User Permission report for all Sage 300 users and applications.

The Application Security and User Management programs let you efficiently manage user setup and permissions within a single Sage 300 company database.

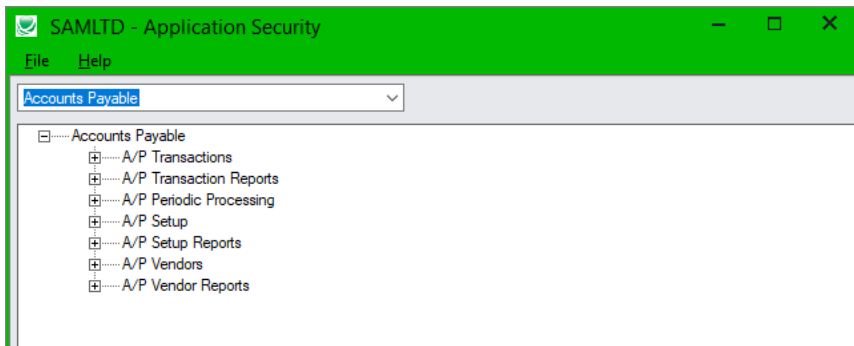
## Note:

- Application Security and User Management are Enterprise Productivity Tools. They will not appear on the Desktop unless you have an Enterprise license for TaiRox Productivity Tools.
- Application Security can be run by the Sage 300 ADMIN user and by non-ADMIN users with permissions for XL – Application Security and AS – Security Groups and User Authorizations.

The Application Security icon appears in **TaiRox Productivity Tools > Administrative Services Tools**.

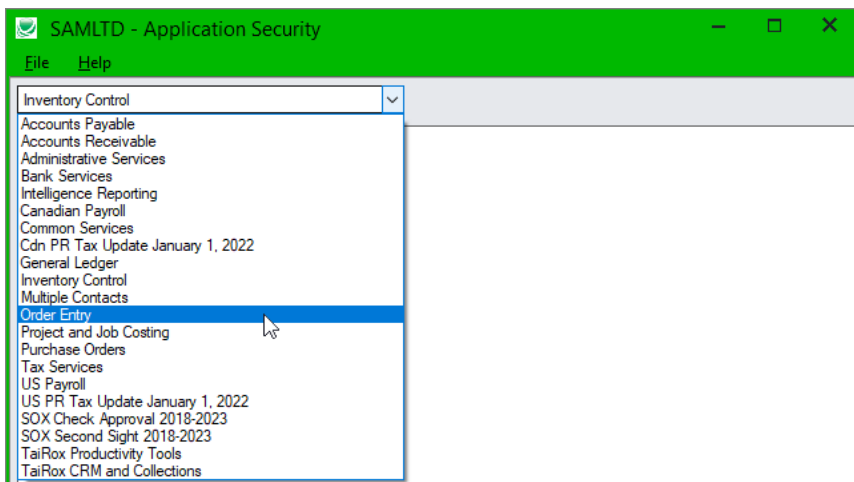


- Double-click the Application Security icon in the Administrative Services Tools folder to open the Application Security form, shown below.

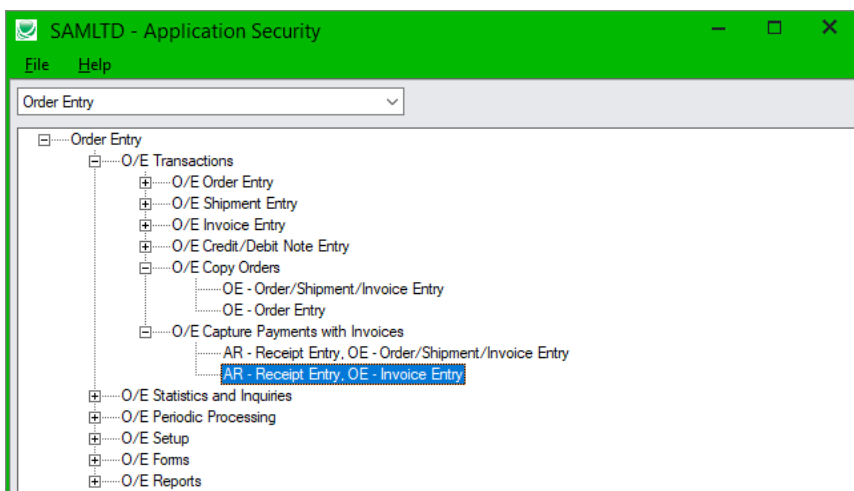


## To View Required Permissions for a Sage 300 Program

- Choose the Sage 300 module from the dropdown list at the top of the form.



- Expand the module to find the program you want to view.



In this example:

- O/E Copy Orders requires either "OE – Order/Shipments/Invoice Entry" or "OE – Order Entry" permissions.
- OE Capture Payments with Invoices requires "AR – Receipt Entry" and either "OE – Order/Shipments/Invoice Entry" permissions or "OE – Invoice Entry" permissions.

Note that the comma separates multiple permissions that are required for program access.