



Fast Units of Measure Tool

User Guide

Important Notice

TaiRox does not warrant or represent that your use of this software product will be uninterrupted or error-free or that the software product can be run with any other version of Sage ERP Accpac other than 5.6A, 6.0A, or any version of Sage 300 other than 2012, 2014 or 2016 or that the information in this document is completely accurate. TaiRox warrants that any media by which you have received this software is free from defects. TaiRox will replace any such defective media. TaiRox expressly disclaims all other warranties, representations, conditions and guarantees of any kind including, but not limited to warranties for merchantability or fitness for a particular use.

Fast Units of Measure Tool User Guide

Summary

The TaiRox Fast Units of Measure Tool ("Fast UOM") is a SQL Server specific tool used to diagnose and, where possible, fix issues that arise in Sage 300 Inventory Control when UOM codes are used with "different case variations" (upper and lower case letters are used inconsistently). For example, "Each" and "EACH" may both be used when the intention was that these codes meant the same thing. Unlike codes used elsewhere in Sage 300, these UOM codes are not forced to be in upper case. Problems can arise when two codes differ only in case and when these codes are used as keys to various tables.

Sage 300 databases are set up with either "case sensitive" or "case insensitive" collation sequences. Fast UOM performs differently after detecting which of these two setups is used.

Overview - Case Insensitive Databases

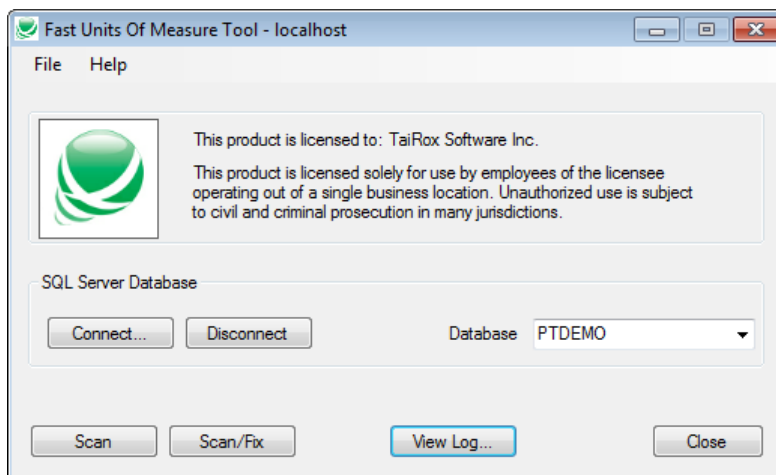
Some Sage 300 databases have been set up to use a case-insensitive collation sequence and it is desirable to change to the advised collation (LATIN1_GENERAL_BIN) before problems arise (crashing, data corruption). Before making the collation switch, Fast UOM will "fix" all entries by converting them to the single form that is in the ICUCOD table - "Each" and "each" and "EACH" become what is in the table (e.g. "Each"). The database can then be successfully dumped and loaded into a case sensitive database. If mixed case issues are not fixed, the load may fail.

Overview - Case Sensitive Databases

A Sage 300 database is set up using a case-sensitive collation sequence: for example, the collation sequence recommended by Sage, LATIN1_GENERAL_BIN. Fast UOM will report "conflicts" and "missing entries" in the ICUNIT and ICUCOD tables - e.g. "Each" and "each" are both entries. Users are advised to find a way to use only one form and eliminate the other. Fast UOM facilitates this by listing the tables and the number of different forms that are in each table.

Running Fast Units of Measure Tool

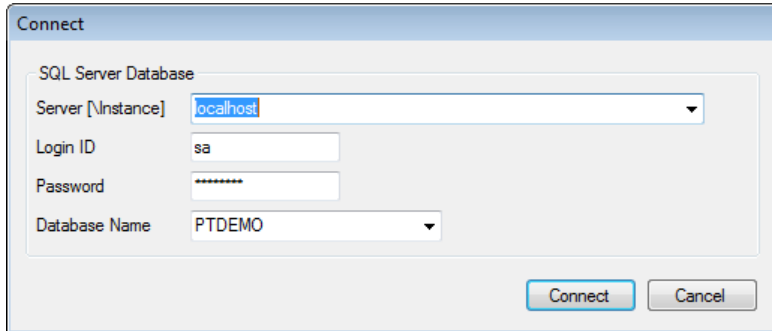
After initial setup, Fast UOM can be run like any other Windows application – from the Programs Menu or from the Sage 300 desktop. It will appear as follows:



Fast Units of Measure Tool User Guide

Running Fast Units of Measure Tool (continued)

After launching Fast UOM, connect to a SQL Server database by clicking on the Connect button and filling in this form:

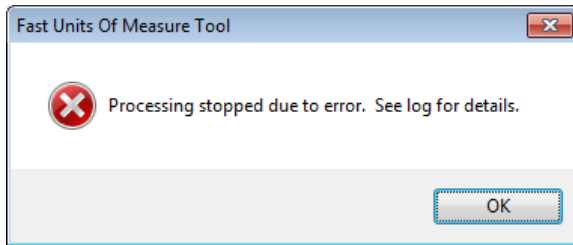


The image shows a 'Connect' dialog box for a SQL Server Database. It contains the following fields:

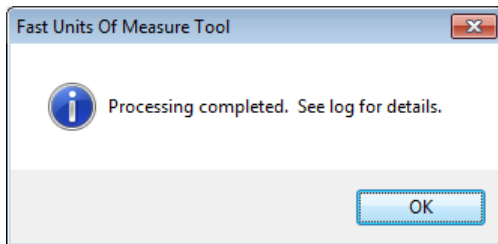
- Server [\Instance]: localhost
- Login ID: sa
- Password: [masked with asterisks]
- Database Name: PTDEMO

Buttons: Connect, Cancel

Select a database from the drop-down list and click on the Scan button or the Scan/Fix button. When Fast UOM is complete, one of these messages will be displayed:



This means that there are items with 2 or more case variations in the ICUCOD or ICUNIT tables. Further detection is based on having only a single variation being present and is suspended until this situation is resolved.

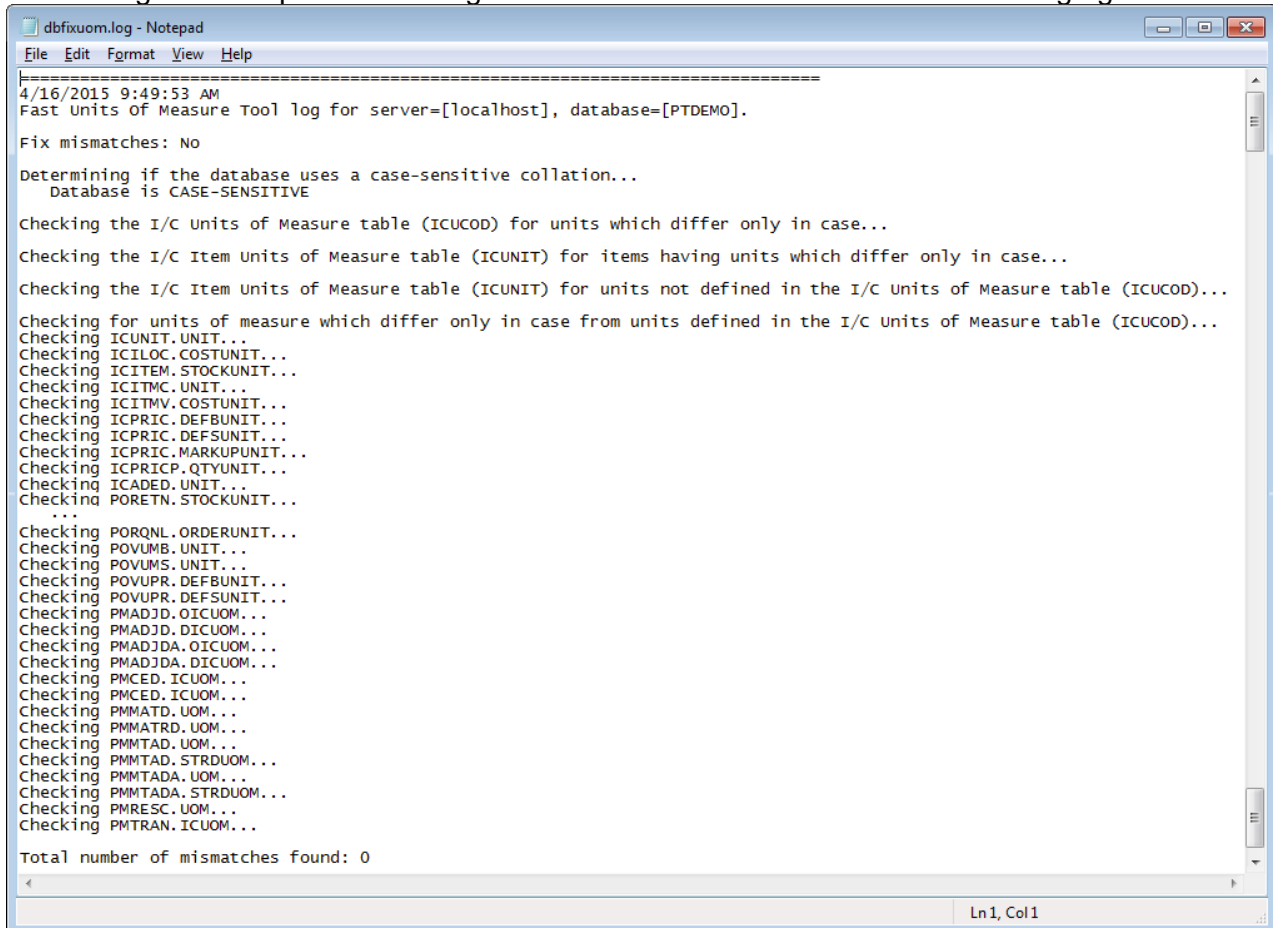


A full scan of all tables with units of measure has been completed with the results reported in the log. While ICUCOD and ICUNIT tables will have only one case variation, other tables may have more than one.

Fast Units of Measure Tool User Guide

Interpreting Fast UOM Log Files - A Clean Log

A clean log file will report no warnings or errors and list all tables that it is checking against:



```
dbfixuom.log - Notepad
File Edit Format View Help
=====
4/16/2015 9:49:53 AM
Fast Units of Measure Tool log for server=[localhost], database=[PTDEMO].

Fix mismatches: No

Determining if the database uses a case-sensitive collation...
Database is CASE-SENSITIVE

Checking the I/C Units of Measure table (ICUCOD) for units which differ only in case...
Checking the I/C Item Units of Measure table (ICUNIT) for items having units which differ only in case...
Checking the I/C Item Units of Measure table (ICUNIT) for units not defined in the I/C Units of Measure table (ICUCOD)...
Checking for units of measure which differ only in case from units defined in the I/C units of Measure table (ICUCOD)...
Checking ICUNIT.UNIT...
Checking ICILOC.COSTUNIT...
Checking ICITEM.STOCKUNIT...
Checking ICITMC.UNIT...
Checking ICITMV.COSTUNIT...
Checking ICPRIC.DEFBUNIT...
Checking ICPRIC.DEFSUNIT...
Checking ICPRIC.MARKUPUNIT...
Checking ICPRIC.QTYUNIT...
Checking ICADED.UNIT...
Checking PORETN.STOCKUNIT...
...
Checking PORQNL.ORDERUNIT...
Checking POVUMB.UNIT...
Checking POVUMS.UNIT...
Checking POVUPR.DEFBUNIT...
Checking POVUPR.DEFSUNIT...
Checking PMADJD.OICUOM...
Checking PMADJD.DICUOM...
Checking PMADJDA.OICUOM...
Checking PMADJDA.DICUOM...
Checking PMCED.ICUOM...
Checking PMCED.ICUOM...
Checking PMMATD.UOM...
Checking PMMATRD.UOM...
Checking PMMTAD.UOM...
Checking PMMTAD.STRUOM...
Checking PMMTADA.UOM...
Checking PMMTADA.STRUOM...
Checking PMRESC.UOM...
Checking PMTRAN.ICUOM...

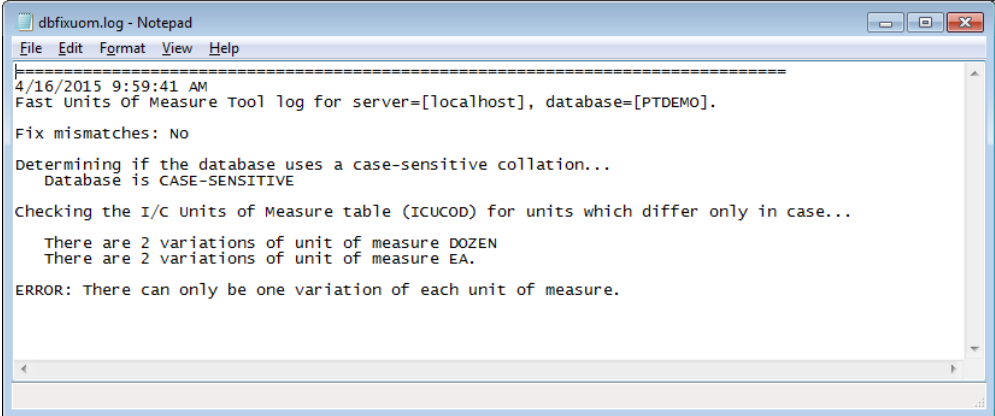
Total number of mismatches found: 0

Ln1, Col1
```

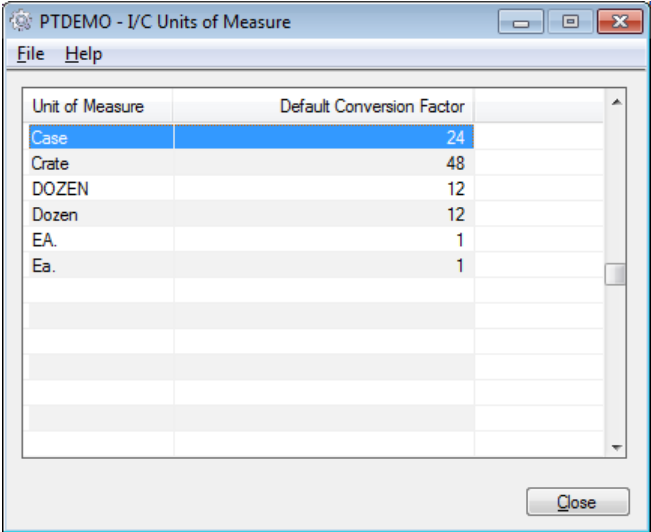
Fast Units of Measure Tool User Guide

Interpreting Fast UOM Log Files - Multiple Variations in the ICUCOD Table

The log will report multiple variations in the ICUCOD table. Further tests will not be performed because this table is regarded by Fast UOM as a table of correct forms with only one case variation.



The underlying cause:



Fast Units of Measure Tool User Guide

Interpreting Fast UOM Log Files - Values not in the ICUCOD Table

The log will report units of measure that are not in the ICUCOD table.

```
dbfixuom.log - Notepad
File Edit Format View Help
=====
4/16/2015 9:45:29 AM
Fast Units of Measure Tool log for server=[localhost], database=[PTDEMO].
Fix mismatches: No
Determining if the database uses a case-sensitive collation...
Database is CASE-SENSITIVE
Checking the I/C Units of Measure table (ICUCOD) for units which differ only in case...
Checking the I/C Item Units of Measure table (ICUNIT) for items having units which differ only in case...
Checking the I/C Item Units of Measure table (ICUNIT) for units not defined in the I/C Units of Measure table (ICUCOD)...
The following units of measure are used by items but not defined in the I/C Units of Measure table.
Box
Carton
Doz.
Pkg.
WARNING: The above units of measure will not be considered during processing.
Checking for units of measure which differ only in case from units defined in the I/C units of Measure table (ICUCOD)...
Checking ICUNIT.UNIT...
Checking ICILOC.COSTUNIT...
Checking ICITEM.STOCKUNIT...
Ln1, Col1
```

The underlying cause (Carton is used in ICITEM and not in the ICUCOD table):

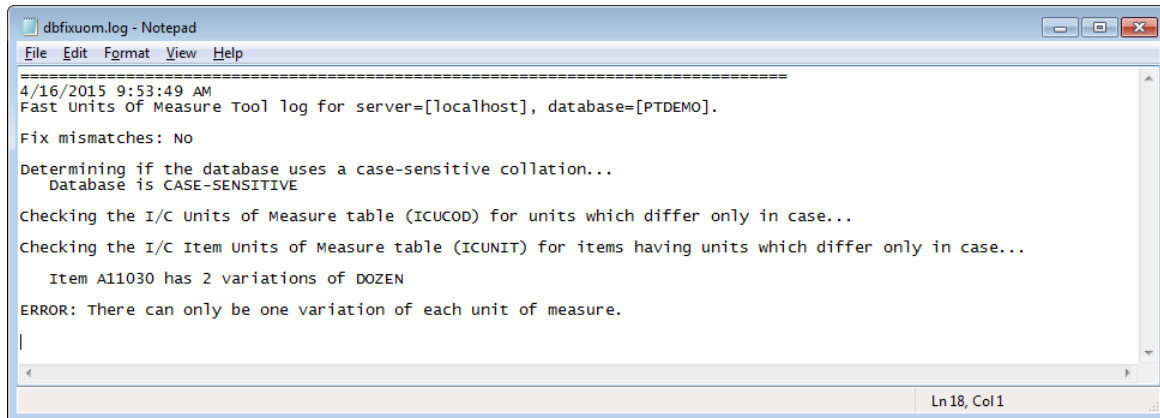
Unit of Measure	Conversion Factor	Stocking Unit of Measure
Box	72	No
Carton	36	No
Dozen	12	No
Ea.	1	Yes

Unit of Measure	Default Conversion Factor
Case	24
Crate	48
Dozen	12
Ea.	1

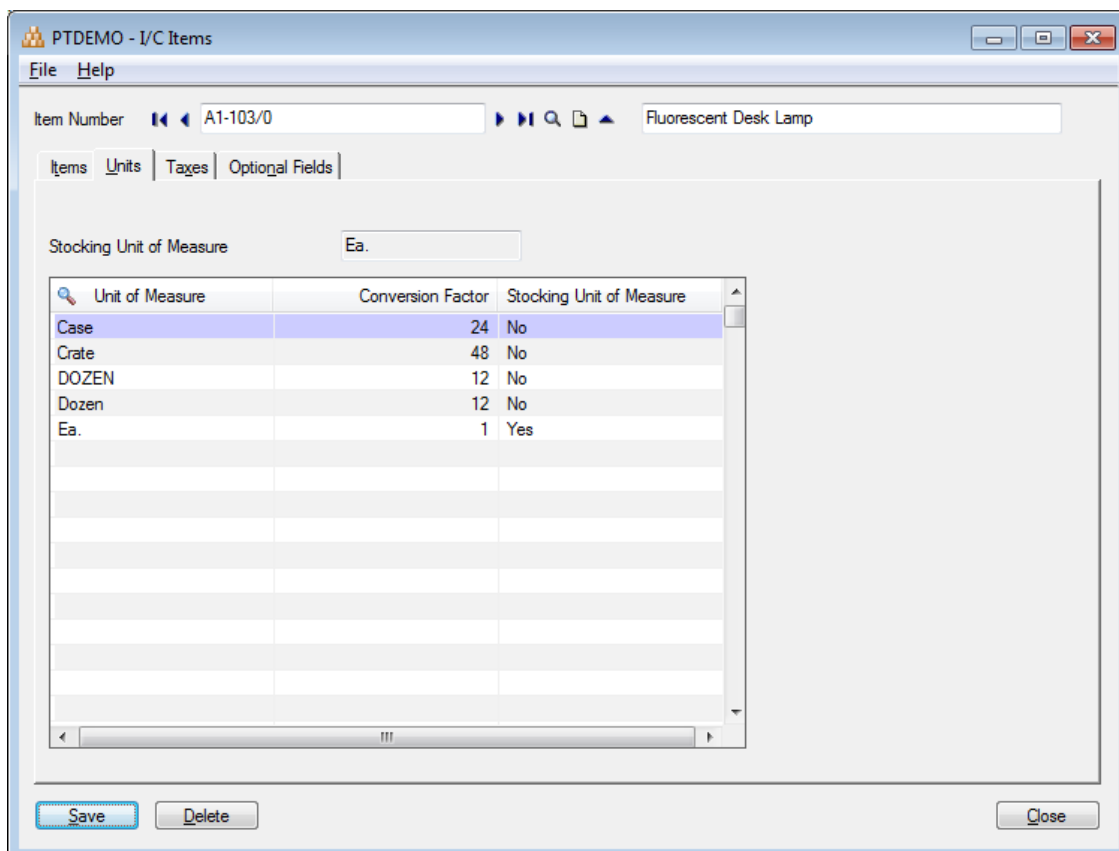
Fast Units of Measure Tool User Guide

Interpreting Fast UOM Log Files - Duplicates in the ICUNIT Table

The log will report multiple variations in the ICUNIT table. Further tests will not be performed before this issue is resolved for all of the items with variations.



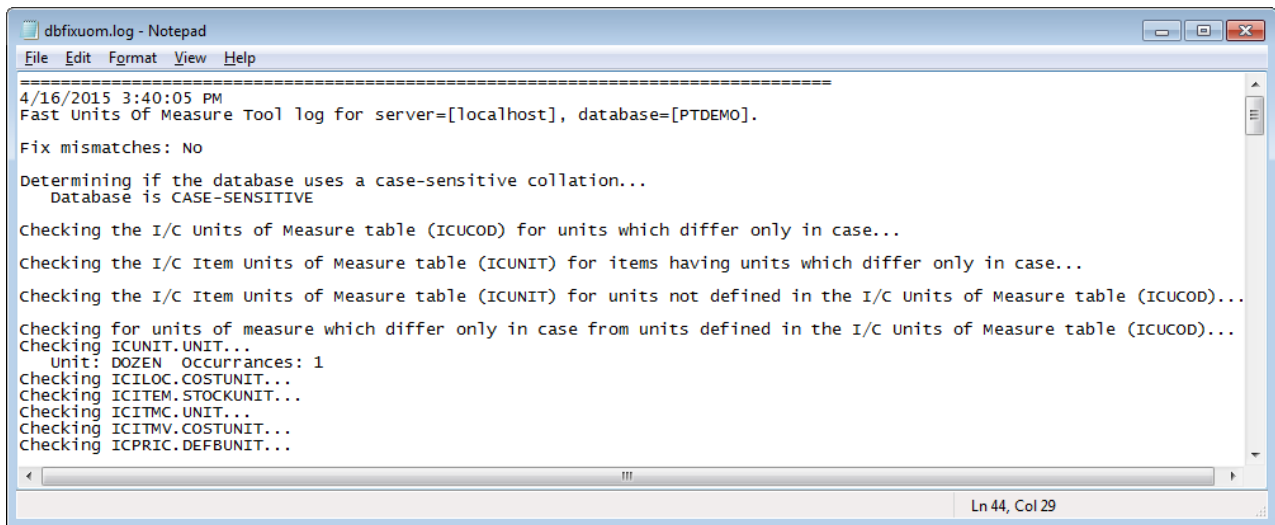
The underlying cause:



Fast Units of Measure Tool User Guide

Interpreting Fast UOM Log Files - Variants in Other Tables

The log will report any variations in the IC/OE/PO tables that are not present in the ICUCOD table:



```
dbfixuom.log - Notepad
File Edit Format View Help
=====
4/16/2015 3:40:05 PM
Fast Units of Measure Tool log for server=[localhost], database=[PTDEMO].

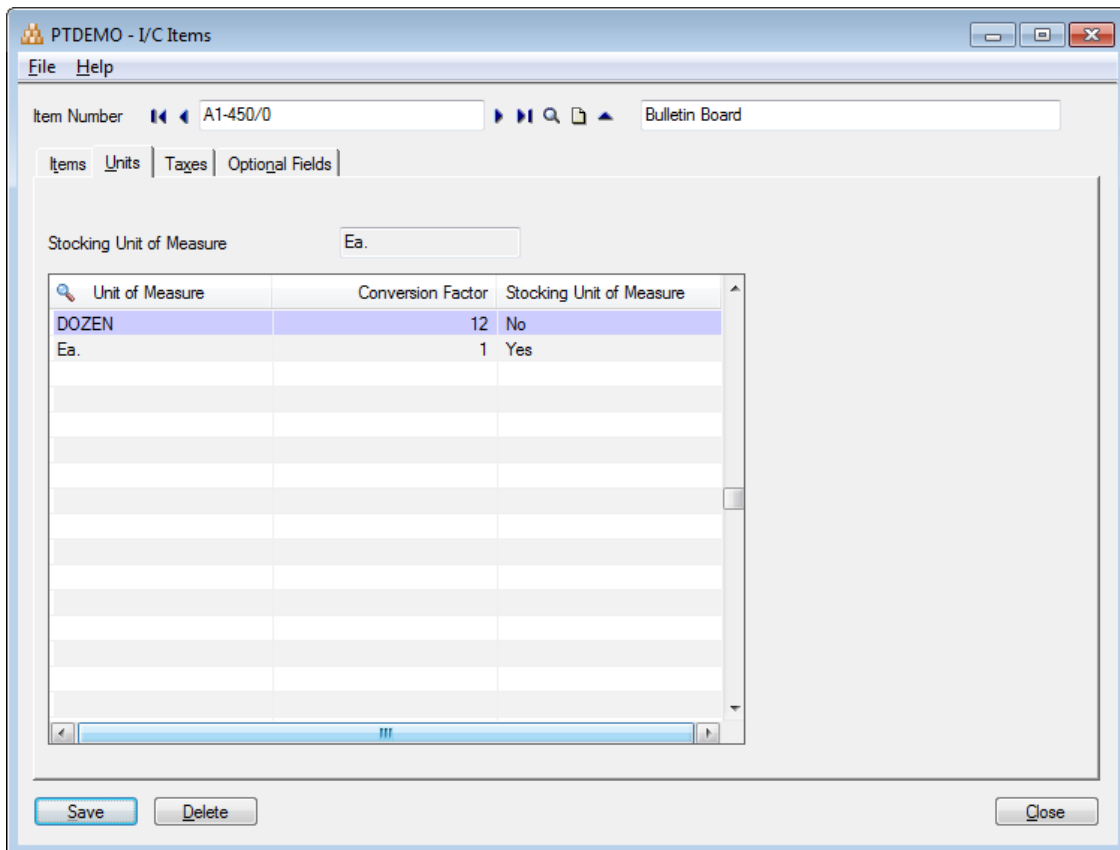
Fix mismatches: No

Determining if the database uses a case-sensitive collation...
Database is CASE-SENSITIVE

Checking the I/C units of Measure table (ICUCOD) for units which differ only in case...
Checking the I/C Item units of Measure table (ICUNIT) for items having units which differ only in case...
Checking the I/C Item units of Measure table (ICUNIT) for units not defined in the I/C Units of Measure table (ICUCOD)...

Checking for units of measure which differ only in case from units defined in the I/C Units of Measure table (ICUCOD)...
Checking ICUNIT.UNIT...
Unit: DOZEN Occurrences: 1
Checking ICITEM.COSTUNIT...
Checking ICITEM.STOCKUNIT...
Checking ICITMC.UNIT...
Checking ICITMV.COSTUNIT...
Checking ICPRIC.DEFBUNIT...
```

The underlying cause:



PTDEMO - I/C Items

Item Number: A1-450/0

Units | Taxes | Optional Fields

Stocking Unit of Measure: Ea.

Unit of Measure	Conversion Factor	Stocking Unit of Measure
DOZEN	12	No
Ea.	1	Yes

Save Delete Close