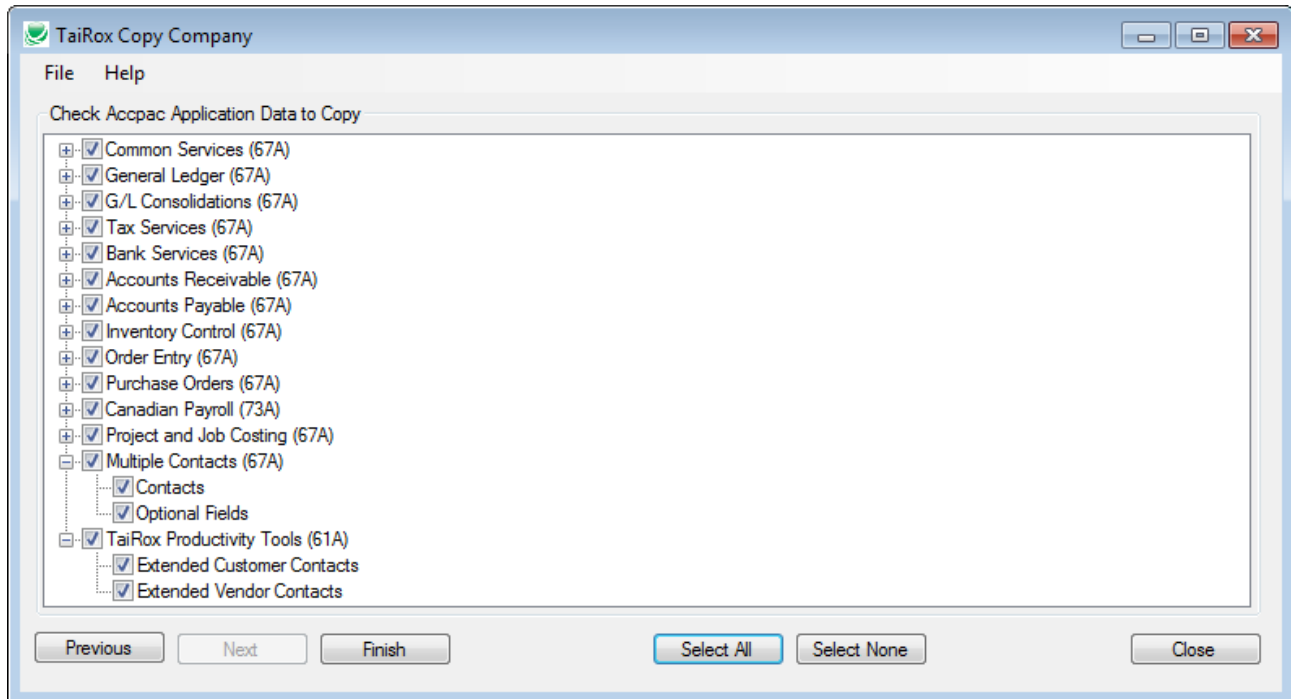


Copy Company for Sage 300

Available for \$795 + \$160 per year, Copy Company will copy an existing company's structure without copying transactional data, flawlessly performing many hours of manual manipulation with one push of a button. Copy general ledger accounts, customers, vendors, inventory items, employees, recurring entries and financial and operational setup options. Support for 2020.1 includes the ability to copy multiple contacts. Watch a Copy Company Demonstration: <https://youtu.be/PA8pH8NgHAc>



Features and Benefits

- Uses any existing Sage 300 company as a template to create new companies with a few clicks. Avoid dozens of export and import operations. Avoid manual reordering of export files.
- Copies setup options that cannot be exported or imported.
- Handles General Ledger account allocations using a multi-pass approach.
- Handles Payroll deductions of deductions using a multi-pass approach.
- Supports the copying of G/L Integration settings to a live database.
- Provides a recipe in the user guide for changing a company's functional currency.
- Uses Sage 300 business objects to ensure that valid database tables are created.

Platform Requirements

- Sage ERP Accpac version 5.6 to 6.0 or Sage 300 2012 to 2020.1
- A single executable program works with all platforms
- **Note that** on some older versions of Sage 300, Copy Company requires 2 Lanpaks, as it accesses 2 companies during its operation.